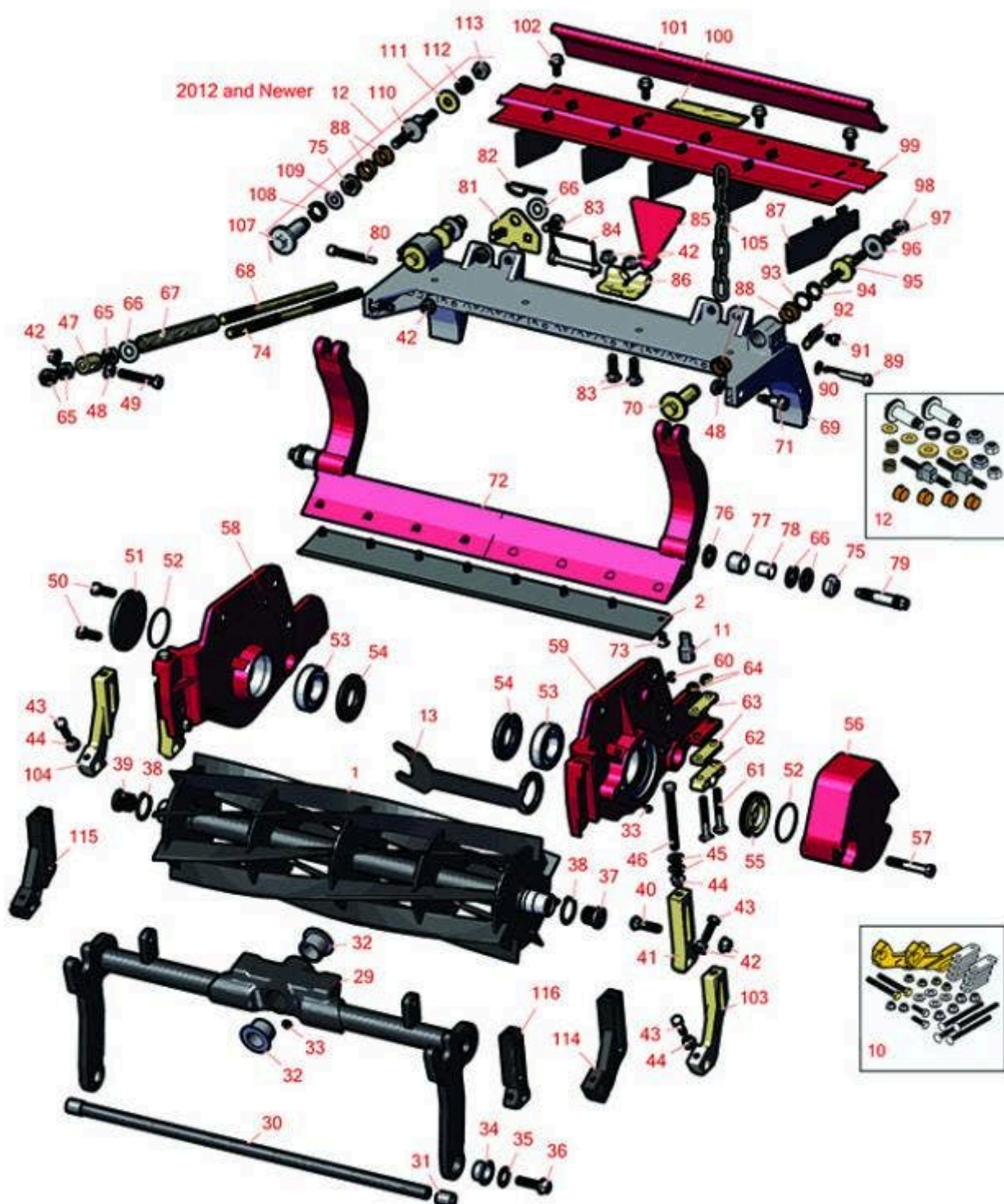




Replaces Toro Reelmaster 6500D Parts

DPA Cutting Unit - Models 03863 & 03864
Reel & Bedknife



All original equipment manufacturers names and part numbers are used for identification purposes only, and we are in no way implying that our products are original equipment parts. Prices subject to change without notice.



Replaces Toro Reelmaster 6500D Parts

DPA Cutting Unit - Models 03863 & 03864
Reel & Bedknife



Item No	R&R Part No.	OEM Part No.	Description	Qty Req	Order Quantity
---------	--------------	--------------	-------------	---------	----------------

R&R Reels, Lifetime Guaranteed

1	R127-2077	127-2077	Reel - 5 Blade Radial 22x7	1	
---	------------------	----------	----------------------------	---	--

Detail Description: R&R Reel blades are manufactured from high carbon-boron alloy steel and then hardened to RC46-49 to match the temper of our bedknives and original equipment bedknives. All R&R Reels are cylindrically ground on bearing surfaces and then relief ground. Reels are then precision computer balanced for extended bearing and reel life. R&R Products Reels are guaranteed against defects in material and workmanship for the life of the reel under normal use.:

1	R133-8209		Reel - 5 Blade Razor Series Radial Low Drag 22x7	1	
---	------------------	--	---	---	--

Detail Description: R&R Razor Reels are manufactured from a special high alloy steel and then hardened to RC48-51 to match the temper of our Razor bedknives and original equipment premium series bedknives. All R&R Reels are cylindrically ground on bearing surfaces, relief ground and precision computer balanced for extended bearing and reel life. R&R Products Reels are guaranteed against defects in material and workmanship for the life of the reel under normal use. You can expect up to double the life from Razor reels over standard reels.:

1	R137-8437	137-8437	Reel - 5 Blade Razor Series Radial Low Drag (RR) w/Bearings and Seals 22x7	1	
---	------------------	----------	--	---	--

Detail Description: R&R Razor Reels are manufactured from a special high alloy steel and then hardened to RC48-51 to match the temper of our Razor bedknives and original equipment premium series bedknives. All R&R Reels are cylindrically ground on bearing surfaces, relief ground and precision computer balanced for extended bearing and reel life. R&R Products Reels are guaranteed against defects in material and workmanship for the life of the reel under normal use. You can expect up to double the life from Razor reels over standard reels.:

1	R107-3264	107-3264	Reel - 8 Blade 22x7	1	
---	------------------	----------	---------------------	---	--

Detail Description: R&R Reel blades are manufactured from high carbon-boron alloy steel and then hardened to RC46-49 to match the temper of our bedknives and original equipment bedknives. All R&R Reels are cylindrically ground on bearing surfaces and then relief ground. Reels are then precision computer balanced for extended bearing and reel life. R&R Products Reels are guaranteed against defects in material and workmanship for the life of the reel under normal use.:

1	R108-9073	108-9073	Reel - 8 Blade 22x7	1	
---	------------------	----------	---------------------	---	--

All original equipment manufacturers names and part numbers are used for identification purposes only, and we are in no way implying that our products are original equipment parts. Prices subject to change without notice.



Replaces Toro Reelmaster 6500D Parts

DPA Cutting Unit - Models 03863 & 03864
Reel & Bedknife



Item No	R&R Part No.	OEM Part No.	Description	Qty Req	Order Quantity
---------	--------------	--------------	-------------	---------	----------------

Detail Description: R&R Reel blades are manufactured from high carbon-boron alloy steel and then hardened to RC46-49 to match the temper of our bedknives and original equipment bedknives. All R&R Reels are cylindrically ground on bearing surfaces and then relief ground. Reels are then precision computer balanced for extended bearing and reel life. R&R Products Reels are guaranteed against defects in material and workmanship for the life of the reel under normal use.:

1	R127-2084	127-2084	Reel - 8 Blade Radial Low Drag 22x7	1	
---	------------------	----------	-------------------------------------	---	--

Detail Description: R&R Reel blades are manufactured from high carbon-boron alloy steel and then hardened to RC46-49 to match the temper of our bedknives and original equipment bedknives. All R&R Reels are cylindrically ground on bearing surfaces and then relief ground. Reels are then precision computer balanced for extended bearing and reel life. R&R Products Reels are guaranteed against defects in material and workmanship for the life of the reel under normal use.:

1	R133-8211	133-8211	Reel - 8 Blade Razor Series Radial w/Bearings and Seals 22x7	1	
---	------------------	----------	--	---	--

Detail Description: R&R Razor Reels are manufactured from a special high alloy steel and then hardened to RC48-51 to match the temper of our Razor bedknives and original equipment premium series bedknives. All R&R Reels are cylindrically ground on bearing surfaces, relief ground and precision computer balanced for extended bearing and reel life. R&R Products Reels are guaranteed against defects in material and workmanship for the life of the reel under normal use. You can expect up to double the life from Razor reels over standard reels.:

1	R137-8432	137-8432	Reel - 8 Blade Radial w/Bearings and Seals 22x7	1	
---	------------------	----------	---	---	--

Detail Description: R&R Reel blades are expertly crafted from premium high carbon-boron alloy steel, heat-treated to perfectly complement both R&R and OEM bedknives. Each reel undergoes precision cylindrical grinding on bearing surfaces, followed by relief grinding for optimal performance. Advanced computer balancing ensures extended reel and bearing life. Backed by our lifetime guarantee against defects in materials and craftsmanship under normal use, R&R Reels deliver unmatched durability and cutting precision you can trust.:

1	R137-8438	137-8438	Reel - 8 Blade Razor Series Radial Low Drag (RR) w/Bearings and Seals 22x7	1	
---	------------------	----------	--	---	--

All original equipment manufacturers names and part numbers are used for identification purposes only, and we are in no way implying that our products are original equipment parts. Prices subject to change without notice.



Replaces Toro Reelmaster 6500D Parts

DPA Cutting Unit - Models 03863 & 03864

Reel & Bedknife



Item No	R&R Part No.	OEM Part No.	Description	Qty Req	Order Quantity
---------	--------------	--------------	-------------	---------	----------------

Detail Description: R&R Razor Reels are manufactured from a special high alloy steel and then hardened to RC48-51 to match the temper of our Razor bedknives and original equipment premium series bedknives. All R&R Reels are cylindrically ground on bearing surfaces, relief ground and precision computer balanced for extended bearing and reel life. R&R Products Reels are guaranteed against defects in material and workmanship for the life of the reel under normal use. You can expect up to double the life from Razor reels over standard reels.:

1	R117-0980	117-0980	Reel - 11 Blade 22x7	1	
---	------------------	----------	----------------------	---	--

Detail Description: R&R Reel blades are manufactured from high carbon-boron alloy steel and then hardened to RC46-49 to match the temper of our bedknives and original equipment bedknives. All R&R Reels are cylindrically ground on bearing surfaces and then relief ground. Reels are then precision computer balanced for extended bearing and reel life. R&R Products Reels are guaranteed against defects in material and workmanship for the life of the reel under normal use.:

1	R108-9074	108-9074	Reel - 11 Blade 22x7	1	
---	------------------	----------	----------------------	---	--

Detail Description: R&R Reel blades are manufactured from high carbon-boron alloy steel and then hardened to RC46-49 to match the temper of our bedknives and original equipment bedknives. All R&R Reels are cylindrically ground on bearing surfaces and then relief ground. Reels are then precision computer balanced for extended bearing and reel life. R&R Products Reels are guaranteed against defects in material and workmanship for the life of the reel under normal use.:

1	R127-0294	127-0294	Reel - 11 Blade Razor Series Forward Swept Low Drag 22x7	1	
---	------------------	----------	---	---	--

Detail Description: R&R Razor Reels are manufactured from a special high alloy steel and then hardened to RC48-51 to match the temper of our Razor bedknives and original equipment premium series bedknives. All R&R Reels are cylindrically ground on bearing surfaces, relief ground and precision computer balanced for extended bearing and reel life. R&R Products Reels are guaranteed against defects in material and workmanship for the life of the reel under normal use. You can expect up to double the life from Razor reels over standard reels.:

1	R127-2085	127-2085	Reel - 11 Blade Radial Low Drag 22x7	1	
---	------------------	----------	---	---	--

Detail Description: R&R Reel blades are manufactured from high carbon-boron alloy steel and then hardened to RC46-49 to match the temper of our bedknives and original equipment bedknives. All R&R Reels are cylindrically ground on bearing surfaces and then relief ground. Reels are then precision computer balanced for extended bearing and reel life. R&R Products Reels are guaranteed against defects in material and workmanship for the life of the reel under normal use.:

All original equipment manufacturers names and part numbers are used for identification purposes only, and we are in no way implying that our products are original equipment parts. Prices subject to change without notice.



Replaces Toro Reelmaster 6500D Parts

DPA Cutting Unit - Models 03863 & 03864
Reel & Bedknife



Item No	R&R Part No.	OEM Part No.	Description	Qty Req	Order Quantity
1	R137-8439	137-8439	Reel - 11 Blade Razor Series Forward Swept Low Drag (Fsr) w/Bearings and Seals 22x7	1	
<i>Detail Description: R&R Razor Reels are manufactured from a special high alloy steel and then hardened to RC48-51 to match the temper of our Razor bedknives and original equipment premium series bedknives. All R&R Reels are cylindrically ground on bearing surfaces, relief ground and precision computer balanced for extended bearing and reel life. R&R Products Reels are guaranteed against defects in material and workmanship for the life of the reel under normal use. You can expect up to double the life from Razor reels over standard reels.:</i>					
1	R137-8433	137-8433	Reel - 11 Blade Radial w/Bearings and Seals 22x7	1	
<i>Detail Description: R&R Reel blades are expertly crafted from premium high carbon-boron alloy steel, heat-treated to perfectly complement both R&R and OEM bedknives. Each reel undergoes precision cylindrical grinding on bearing surfaces, followed by relief grinding for optimal performance. Advanced computer balancing ensures extended reel and bearing life. Backed by our lifetime guarantee against defects in materials and craftsmanship under normal use, R&R Reels deliver unmatched durability and cutting precision you can trust.:</i>					
R&R Bedknives, Lifetime Guaranteed					
2	R108-9096	108-9096	Bedknife - Standard	1	
<i>Detail Description: R&R Bedknives are manufactured from high carbon-boron alloy steel and then hardened to RC46-49 to match the temper of our reel blades and original equipment reels. Bedknives are surface ground on the top and front edge and straightened three times before being packaged with oil for rust prevention. All R&R Bedknives now have an increased front edge grind for added life. All R&R Bedknives are guaranteed against defects in material and workmanship under normal use for the life of the part.:</i>					
2	R110-4074	110-4074	Bedknife - High Cut	1	
<i>Detail Description: R&R Bedknives are manufactured from high carbon-boron alloy steel and then hardened to RC46-49 to match the temper of our reel blades and original equipment reels. Bedknives are surface ground on the top and front edge and straightened three times before being packaged with oil for rust prevention. All R&R Bedknives now have an increased front edge grind for added life. All R&R Bedknives are guaranteed against defects in material and workmanship under normal use for the life of the part.:</i>					
2	R110-4084	110-4084	Bedknife - Low Cut	1	

All original equipment manufacturers names and part numbers are used for identification purposes only, and we are in no way implying that our products are original equipment parts. Prices subject to change without notice.



Replaces Toro Reelmaster 6500D Parts

DPA Cutting Unit - Models 03863 & 03864
Reel & Bedknife



Item No	R&R Part No.	OEM Part No.	Description	Qty Req	Order Quantity
---------	--------------	--------------	-------------	---------	----------------

Detail Description: R&R Bedknives are manufactured from high carbon-boron alloy steel and then hardened to RC46-49 to match the temper of our reel blades and original equipment reels. Bedknives are surface ground on the top and front edge and straightened three times before being packaged with oil for rust prevention. All R&R Bedknives now have an increased front edge grind for added life. All R&R Bedknives are guaranteed against defects in material and workmanship under normal use for the life of the part.:

2	R120-1640	120-1640	Bedknife - Low Cut Extended	1	
---	------------------	----------	-----------------------------	---	--

Detail Description: R&R Bedknives are manufactured from high carbon-boron alloy steel and then hardened to RC46-49 to match the temper of our reel blades and original equipment reels. Bedknives are surface ground on the top and front edge and straightened three times before being packaged with oil for rust prevention. All R&R Bedknives now have an increased front edge grind for added life. All R&R Bedknives are guaranteed against defects in material and workmanship under normal use for the life of the part.:

R&R Razor Tool Steel Bedknives, Lifetime Guaranteed

2	R108-9095	108-9095, 137-0833	Bedknife - Razor Tool Steel - 22 High Cut	1	
---	------------------	-----------------------	--	---	--

Detail Description: R&R Razor bedknives are manufactured from premium alloy tool steel steel and then hardened to RC48-51 to match the temper of our Razor reel blades and original equipment premium series reels. Bedknives are surface ground on the top and front edge and specially packaged for rust prevention. All R&R Bedknives now have an increased front edge grind for added life. All R&R Bedknives are guaranteed against defects in material and workmanship under normal use for the life of the part. You can expect up to double the life over standard bedknives.:

2	R119-4280	119-4280	Bedknife - Razor Tool Steel - 22 x 3/8 Extended	1	
---	------------------	----------	--	---	--

Detail Description: R&R Razor bedknives are manufactured from premium alloy tool steel steel and then hardened to RC48-51 to match the temper of our Razor reel blades and original equipment premium series reels. Bedknives are surface ground on the top and front edge and specially packaged for rust prevention. All R&R Bedknives now have an increased front edge grind for added life. All R&R Bedknives are guaranteed against defects in material and workmanship under normal use for the life of the part. You can expect up to double the life over standard bedknives.:

2	R137-0832	125-2771, 127-7132, 137-0832	Bedknife - Razor Tool Steel - 3/8 x 22 Lowcut	1	
---	------------------	------------------------------------	--	---	--

Overhaul Kits & Service Tools

All original equipment manufacturers names and part numbers are used for identification purposes only, and we are in no way implying that our products are original equipment parts. Prices subject to change without notice.



Replaces Toro Reelmaster 6500D Parts

DPA Cutting Unit - Models 03863 & 03864
Reel & Bedknife



Item No	R&R Part No.	OEM Part No.	Description	Qty Req	Order Quantity
10	R110-9600	110-9600	High HOC Kit	1	
<i>Detail Description: Includes 1 ea.: R120-0404, R120-0405 & 2 ea: R112-7451, R322-16, R445722 & 4 ea.: R106-9758, R104-8300, R453011, R104-8301 & 8 ea: R106-3925:</i>					
11	R51-0880	51-0880	Bedknife Screw Driver Tool	1	
<i>Detail Description: Easily install and remove bed knife screws with the help of a ratchet with 3/8" drive. Tool manufactured with hardened alloy steel.:</i>					
12	R120-7230	120-7230	Overhaul Kit - Fits DPA Units	1	
<i>Detail Description: Incl 2 ea.: R108-0015, R115-7039, R119-4155, R120-5116, R120-5118, R120-5120, R3296-33, R3296-48 & 4 ea: R106-5344:</i>					
13	R117-0975	117-0975	Tool- Reel Bearing Installation	1	
Other Parts Available					
29	R110-9713	110-9713	Carrier Frame Assy	1	
<i>Detail Description: Includes 2 each: R94-1291 Bushings and R93-2877 Bushings:</i>					
30	R108-4284	108-4284	Shaft - Support	1	
31	R108-4279	108-4279	Spacer - Frame	2	
32	R94-1291	94-1291	Bushing - Flanged	2	
33	R302-5	21-6010, 302-11, 302-37, 302-47, 302-5, 302-57, 302-58, 302-6, 31-0300, 32-9660, 60-0800, 62-3880, 92-4181	Fitting - Grease	3	
34	R93-2877	93-2877	Bushing - Flanged	2	

All original equipment manufacturers names and part numbers are used for identification purposes only, and we are in no way implying that our products are original equipment parts. Prices subject to change without notice.



Replaces Toro Reelmaster 6500D Parts

*DPA Cutting Unit - Models 03863 & 03864
Reel & Bedknife*



Item No	R&R Part No.	OEM Part No.	Description	Qty Req	Order Quantity
35	R67-9410	67-9410	Washer - Clevis Pin	2	
36	R3234-19	3234-19	Bolt - Hex Washer 3/8-16x1-3/4	2	
37	R107-3275	107-3275	Insert - Threaded - RH - 9 Tooth	1	
38	R92-2601	92-2601	Snap Ring	2	
39	R107-3276	107-3276	Insert - Threaded - LH - 9 Tooth	1	
40	R3231-4	01-157-0440, 01-173-0612, 3231-4	Bolt - Carriage 3/8-16 x 1-1/2	2	
41	R107-2952	107-2952	Bracket - Front Roller	2	
42	R104-8301	104-8301, 104-9301, 109-6658, 133-7570	Locknut - 3/8-16 Nylon Flanged	5	
43	R322-16	322-16, Apr-00	Bolt - Hex HD 5/16-18 x 1-1/8	2	
44	R445722	30-8980, 32128-2, 32128-20, 32128-20	Nut - Serrated Washer	4	

All original equipment manufacturers names and part numbers are used for identification purposes only, and we are in no way implying that our products are original equipment parts. Prices subject to change without notice.



Replaces Toro Reelmaster 6500D Parts

DPA Cutting Unit - Models 03863 & 03864

Reel & Bedknife



Item No	R&R Part No.	OEM Part No.	Description	Qty Req	Order Quantity
45	R453011	01-166-0100, 01-166-0120, 01-166-0270, 01-166-0500, 01-166-0600, 01-166-0620, 132-4593, 2356-3, 237-12, 24-10-AD, 24-11-AD, 24-11-BD, 24-12-AD, 24-12-BD, 30-9310, 32-8190, 3256-24, 3256-3, 3256-36, 3256-4, 453011, 47-9950, 48-9220, 513458, 7-0052	Washer - Flat 3/8 SAE Y/Zinc	4	
46	R112-7451	100-9429, 112-7451	Bolt - Hex Tap 3/8-16 x 2-3/4	2	
46	R107-4026	107-4026	Bolt - Hex Tap 3/8-16 x 3-3/4	2	
47	R99-8662	99-8662	Tube - Spring	1	
48	R32128-43	30-8990, 32128-43, 3290-357	Nut - Flanged Whiz - 3/8-16	3	
48	R3296-39	32127-25, 32128-36, 3290-357, 3296-17, 3296-22, 3296-39, 915663P, 99-7443	Locknut - 3/8-16 Nylon	3	

All original equipment manufacturers names and part numbers are used for identification purposes only, and we are in no way implying that our products are original equipment parts. Prices subject to change without notice.



Replaces Toro Reelmaster 6500D Parts

DPA Cutting Unit - Models 03863 & 03864

Reel & Bedknife



Item No	R&R Part No.	OEM Part No.	Description	Qty Req	Order Quantity
49	R104-3396	104-3396	Bolt - Hex HD 3/8-16 x 2-1/4	1	
50	R323-6	01-150-0010, 01-178-0608, 20-47-AD, 20-47-AGD, 3224-2, 323-6, 49-3510, 908034P, 908332	Bolt - Hex HD 3/8-16 x 1 GR5 YZ	2	
51	R94-2703	94-2703	Plug - Plastic Spindle Housing	1	
52	R112-6967	112-6967	O-Ring	2	
53	R93-2489	93-2489	Bearing - Reel	2	
54	R107-4028	105-6757, 107-4028	Seal - Grease	2	
55	R107-2954	107-2954	Nut - Bearing Adjuster	1	
56	R108-4269-01	108-4269-01	Weight	1	
57	R101526	01-150-0970, 01-178-0620, 20-53-AGD, 321-11, 3224-8, 323-11, 323-12, 323-31, 323-4, 323-47	Bolt - Hex HD 3/8-16 x 2-1/2 GR5	2	
58	R108-9083	108-9083	Side Plate - RH - Fits OEM Units Only	1	
59	R108-9082	108-9082	Side Plate - LH - Fits OEM Units Only	1	
60	R170714	302-34, 302-39, 62-3520	Fitting - Pressure Relief	2	

All original equipment manufacturers names and part numbers are used for identification purposes only, and we are in no way implying that our products are original equipment parts. Prices subject to change without notice.



Replaces Toro Reelmaster 6500D Parts

DPA Cutting Unit - Models 03863 & 03864

Reel & Bedknife



Item No	R&R Part No.	OEM Part No.	Description	Qty Req	Order Quantity
61	RP17609-2	106-9758, 3230-7	Bolt - Carriage 5/16-18 x 1-1/2	4	
62	R106-3924	106-3924	Bracket - Rear Roller	2	
63	R106-3925	106-3925	Shim - 1/4 - Rear Roller HOC	4	
63	R119-0626	119-0626	Shim - Roller - 1/4 in - Slotted	4	
64	R104-8300	104-8300, 104-8300 , 119-4041	Locknut - 5/16-18 Flanged Y/Zinc	4	
65	R443818	01-191-0813, 3218-18, 3218-5	Nut - 1/2-13 Hex Jam Zinc	3	
66	R453017	01-166-0050, 01-166-0240, 01-166-0800, 24-13-AD, 24-14-AD, 32-8110, 3256-26, 3256-6, 453017, 69-8980, 87-7270	Washer - Flat 1/2	2	
66	R455012	3256-26, 41-8440	Washer - Flat 1/2 x 3/4	2	
66	R87-7270-01	87-7270	Washer - Flat 1/2	2	
67	R110-4079	110-4079	Spring	1	
68	R115-2007	107-7437, 115-2007	Rod - Spring	1	
<i>Tech Note: Ser# 31300001-403420000:</i>					
69	R107-3258	107-3258	Frame	1	
70	R106-5363	106-5363	Shaft - Adjusting - Bed Bar - Stainless	2	

All original equipment manufacturers names and part numbers are used for identification purposes only, and we are in no way implying that our products are original equipment parts. Prices subject to change without notice.



Replaces Toro Reelmaster 6500D Parts

DPA Cutting Unit - Models 03863 & 03864

Reel & Bedknife



Item No	R&R Part No.	OEM Part No.	Description	Qty Req	Order Quantity
71	R107-2979	107-2979	Bolt - Shoulder	6	
72	R107-3273-01	107-3273-01	Bed Bar - Fits OEM Units Only	1	
73	R150476	3-3816, 3-6462, 57-4910	Screw - Bedknife 5/16-18 x 5/8	8	
73	R150475	3-6462	Screw - Bedknife Stainless 5/16-18 x 5/8	8	
<i>Detail Description: Pre-Packaged in bags of 50:</i>					
74	R99-8661	99-8661	Rod-Spring	1	
<i>Tech Note: Ser# 270000001-270999999:</i>					
75	R3296-33	3296-33	Locknut - 5/8-18 ESNA Jam	2	
76	R61-1950	61-1950	Washer - Nylon - Bed Bar	4	
77	R106-9618	106-9618	Bushing - Rubber	2	
78	R56-9520	56-9520	Bushing - Nyliner	2	
79	R106-9623	106-9623	Bolt - Bedbar	2	
80	R107-7773	107-7773	Bolt - Soc HD Cap 5/16-18 x 2-1/2	1	
81	R110-4069	110-4069	Bracket	1	
82	R92-2762	92-2762	Pin - Snap	1	
83	R3231-25	01-173-0610, 30-9970, 3231-25, 3231-3, 900064P	Bolt - Carriage 3/8-16 x 1-1/4	4	
84	R107-7400	107-7400	Pin - Lynch	1	
85	R110-4088-03	110-4088-03, 119-8010-03	Kickstand	1	

All original equipment manufacturers names and part numbers are used for identification purposes only, and we are in no way implying that our products are original equipment parts. Prices subject to change without notice.



Replaces Toro Reelmaster 6500D Parts

DPA Cutting Unit - Models 03863 & 03864

Reel & Bedknife



Item No	R&R Part No.	OEM Part No.	Description	Qty Req	Order Quantity
86	R110-4058	110-4058	Bracket - Chain	1	
87	R110-1706	110-1706	Deflector	5	
88	R106-5344	106-5344	Bushing - Flanged and Keyed	4	
89	R322-14	01-150-0830, 01-178-0524, 30-8900, 322-14	Bolt - Hex HD 5/16-18 x 3 GR5	1	
90	R3256-74	3256-74	Washer - Flat	1	
91	R114-9396	114-9396, 119-4067	Bolt - Hex HD 5/16-18 x 3/8	2	
91	R322-26	322-26	Bolt - Hx HD 5/16-18 x 3/8	2	
92	R99-2097	99-2097	Detent - Bed Bar Adjuster	2	
93	R106-5335	106-5335	Wave Washer - Reel Adjusting	2	
94	R32120-93	32120-93	Snap Ring - HD	2	
95	R99-2096	99-2096	Screw - Bed Bar Adjustment - M10 Thrd 1 End	2	
96	R99-2098	99-2098	Washer - Bed Bar Adjuster	2	
96	R119-4155	119-4155	Washer - Hardened	2	
97	R99-3755	99-3755	Spring - Bed Bar Adjusting	2	
98	R33025-00	32025-00, 33025-00	Locknut - 10mm x 1.5 Jam	2	
99	R107-2996	107-2996	Grass Shield - Front	1	
100	R93-6688	93-6688	Decal - Warning	1	
100	R137-9706	137-9706	Decal- Warning	1	
101	R107-7779-01	107-7779-01	Grass Shield Assy - Rear	1	

All original equipment manufacturers names and part numbers are used for identification purposes only, and we are in no way implying that our products are original equipment parts. Prices subject to change without notice.



Replaces Toro Reelmaster 6500D Parts

DPA Cutting Unit - Models 03863 & 03864
Reel & Bedknife



Item No	R&R Part No.	OEM Part No.	Description	Qty Req	Order Quantity
102	R3234-5	3234-5, 62-3310	Bolt - 5/16-18x3/4 Hx Ser Was HD	4	
103	R108-4213	108-4213	Bracket- HOC - LH - Groomer	1	
104	R108-4214	108-4214	Bracket-HOC - RH - Groomer	1	
105	R114-3972	114-3972	Chain	1	
107	R120-5118	120-5118	Shaft - Adjuster	2	
<i>Detail Description: 2012 & Newer:</i>					
108	R120-5116	120-5116	Washer - Wave	2	
109	R108-0015	108-0015	Washer - Flat	2	
110	R115-7039	115-7039	Screw - Adjuster - Bedbar	2	
112	R120-5120	120-5120	Spring - Compression	2	
113	R3296-48	119-4039, 32146-7, 3296-34, 3296-48	Locknut - 7/16-14 ESNA	2	
114	R120-0404	120-0404	Bracket- High HOC - LH	2	
<i>Detail Description: Fits 2011 & Newer:</i>					
115	R120-0405	120-0405	Bracket - High HOC - RH	2	
<i>Detail Description: Fits 2011 & Newer:</i>					
116	R125-2796	125-2796	Bracket- Front HOC	2	
<i>Detail Description: Fits 2013 & Newer:</i>					

All original equipment manufacturers names and part numbers are used for identification purposes only, and we are in no way implying that our products are original equipment parts. Prices subject to change without notice.