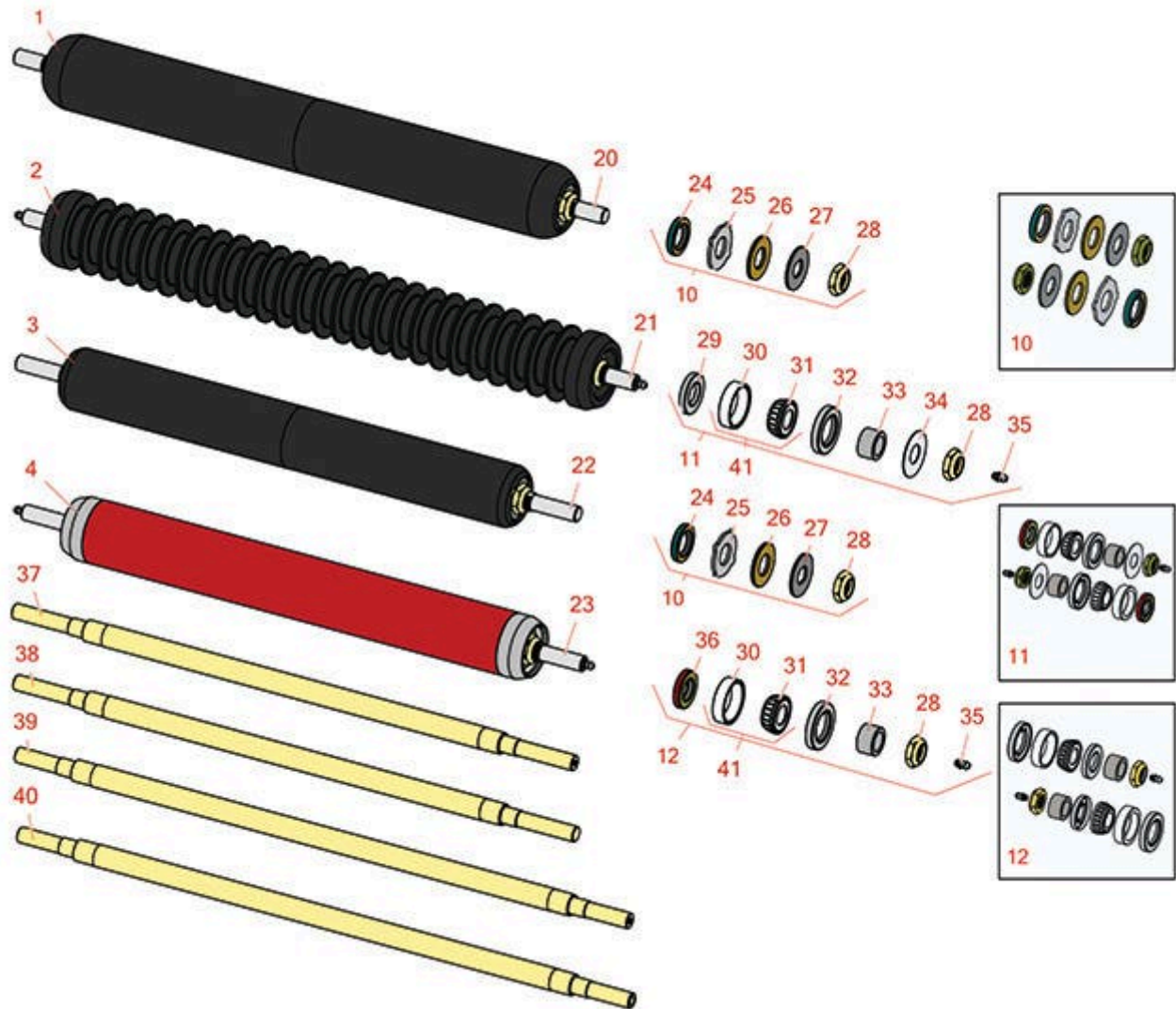




Replaces Toro Reelmaster 6700D Parts

Cutting Unit - Models 03853, 03854 & 03856
Rollers



All original equipment manufacturers names and part numbers are used for identification purposes only, and we are in no way implying that our products are original equipment parts. Prices subject to change without notice.



Replaces Toro Reelmaster 6700D Parts

Cutting Unit - Models 03853, 03854 & 03856
Rollers



Item No	R&R Part No.	OEM Part No.	Description	Qty Req	Order Quantity
---------	--------------	--------------	-------------	---------	----------------

R&R Rollers

1	R1504220		Roller - Smooth UHMW Polyethylene	1	
---	-----------------	--	-----------------------------------	---	--

Tech Note: Machined from solid UHMW, this low maintenance roller uses a 1" solid stainless steel shaft and requires no grease. UHMW material prevents build-up of debris. Shaft length measures 25-1/2":

2	R150700	93-2884, 94-4330, 94-4336, 99-8686	Roller - Grooved Cast Steel	1	
---	----------------	---	-----------------------------	---	--

Tech Note: Constructed with cast steel body and a through shaft. This heavy duty roller uses tapered roller bearings for extended life. Shaft length measures 26-1/2":

3	R1504200		Roller - Smooth UHMW Polyethylene	1	
---	-----------------	--	-----------------------------------	---	--

Tech Note: Machined from solid UHMW, this low maintenance roller uses a 1" solid stainless steel shaft and requires no grease. UHMW material prevents build-up of debris. Shaft length measures 24-1/4":

4	R150710	93-1250, 94-4331	Roller - Smooth Heavy Duty Tubular Steel	1	
---	----------------	---------------------	--	---	--

Tech Note: Constructed with a through shaft, this heavy duty roller uses tapered bearings for extended life. Shaft length measures 24-1/4":

Overhaul Kits

10	R101399		Overhaul Kit - UHMW 2 Pc Roller	1	
----	----------------	--	---------------------------------	---	--

Tech Note: Fits all R&R 2-1/2" - 3-1/2" Dia. Black UHMW Plastic Rollers that do not use ball bearings.. Includes 2 ea.: R1503230 Star Washers, R1503470 Seals, R150333 Thrust Washers, R3296-15 Locknuts, R1503471 Bronze Thrust Washers:

11	R100137		Overhaul Kit - Roller	1	
----	----------------	--	-----------------------	---	--

Tech Note: Includes 2 ea.: R3296-15 Locknuts, R302-5 Grease Fittings, R253-122 Seals, R253-117 Seals, R5-4038 Wear Sleeves, R254-78 Bearings & R254-79 Bearing Cups:

12	R100141		Overhaul Kit - Roller	1	
----	----------------	--	-----------------------	---	--

All original equipment manufacturers names and part numbers are used for identification purposes only, and we are in no way implying that our products are original equipment parts. Prices subject to change without notice.



Replaces Toro Reelmaster 6700D Parts

Cutting Unit - Models 03853, 03854 & 03856
Rollers



Item No	R&R Part No.	OEM Part No.	Description	Qty Req	Order Quantity
---------	--------------	--------------	-------------	---------	----------------

Tech Note: Includes 2 ea: R253-117 Seals, R253-152 Seals, R254-78 Bearings, R254-79 Cups, R302-5 Grease Fittings, R3296-15 Locknuts, R5-4038 Wear Sleeves, R150504 Washers:

Other Parts Available

20	R1504230		Shaft - SS Fits R1504220 Roller	1	
21	R150702		Shaft - Roller	1	
22	R1504210		Shaft - 2 Pc Roller	1	
23	R150713		Shaft - Fits RR Rear Roller	1	
24	R1503470		Seal - Inner Wiper	2	
25	R1503230		Washer - Thrust Outer Keyed	2	
26	R1503471		Washer - Thrust SAE660 Bronze	2	
27	R150333		Washer - Flat Keyed Outer SS	2	
28	R3296-15	116-7306, 32118-5, 32127-23, 32127-47, 3296-15	Locknut - 3/4-16 Nylon Jam	2	
29	R253-122	253-122, 30-0640	Seal	2	
30	R254-79	01-103-0060, 01-103-0130, 1-633584, 252-106, 254-79, 32-7800, 32-9590	Cup - Bearing	2	

Tech Note: Use R254-79M installation mandrel to properly install race.:

All original equipment manufacturers names and part numbers are used for identification purposes only, and we are in no way implying that our products are original equipment parts. Prices subject to change without notice.



Replaces Toro Reelmaster 6700D Parts

Cutting Unit - Models 03853, 03854 & 03856
Rollers



Item No	R&R Part No.	OEM Part No.	Description	Qty Req	Order Quantity
31	R254-78	01-102-0060, 01-102-0130, 1-633585, 254-78, 32-7790, 32-9580, 93-4813	Tapered Bearing Cone	2	
32	R253-117	253-117, 253-165	Seal - Outer Triple Lip	2	
33	R5-4038	5-4038, 51-2420	Sleeve - Wear Reel Shaft	2	
34	R150504	66-5620	Washer	2	
35	R302-5	21-6010, 302-11, 302-37, 302-47, 302-5, 302-57, 302-58, 302-6, 31-0300, 32-9660, 60-0800, 62-3880, 92-4181	Fitting - Grease	2	
36	R253-152	253-116, 253-152	Seal - Inner Roller	2	
37	R94-4328	94-4328	Shaft - Rear Roller Fits OEM	1	
38	R93-1256	93-1256	Shaft - Fits OEM Rear Roller	1	
39	R94-4329	94-4329	Shaft - Greasable Fits OEM	1	
40	R93-2887	93-2887	Shaft - Roller	1	
41	R500534	1-633585	Bearing - with Cup	2	

All original equipment manufacturers names and part numbers are used for identification purposes only, and we are in no way implying that our products are original equipment parts. Prices subject to change without notice.