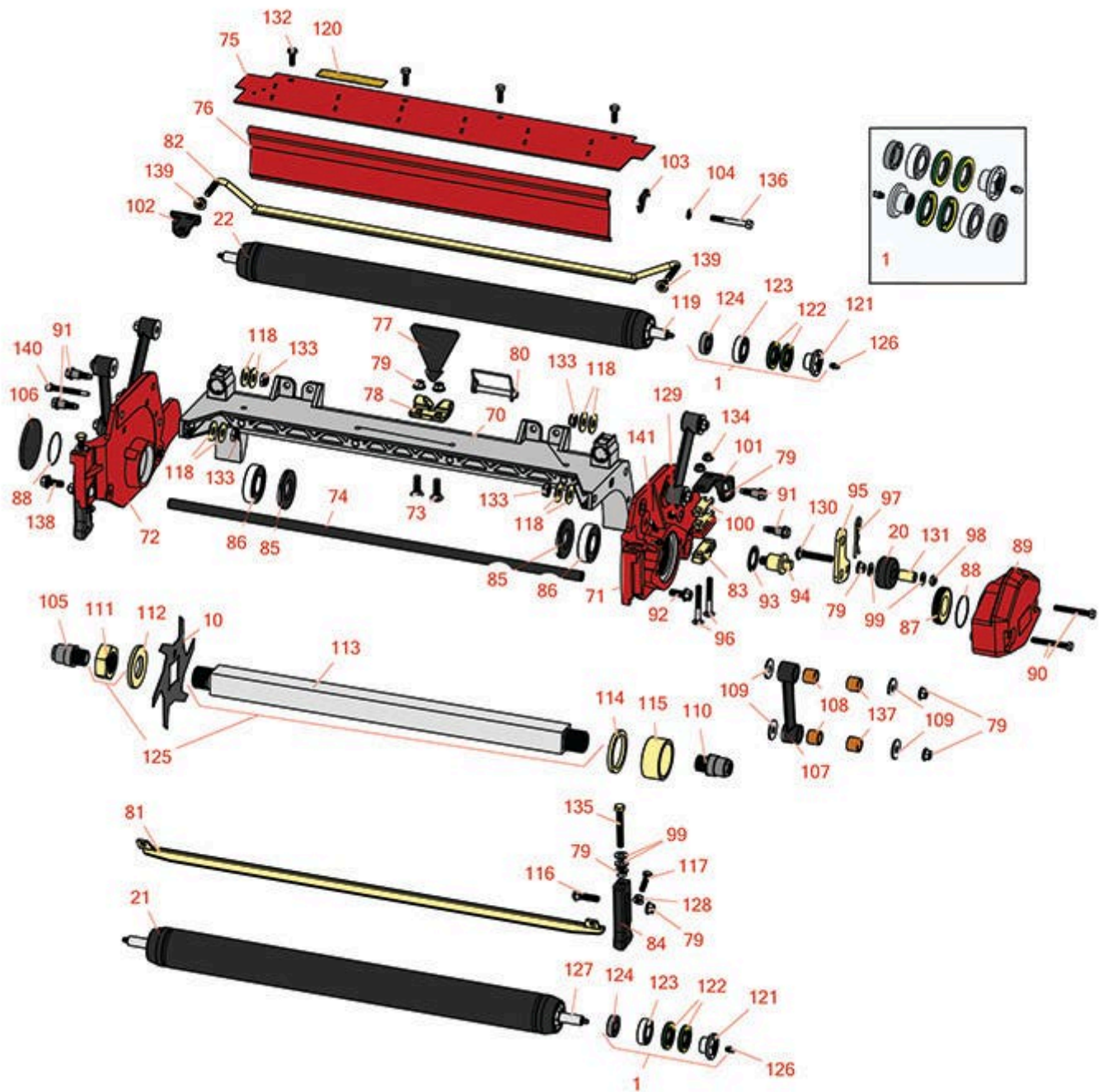




Replaces Toro Reelmaster 3100-D Parts

27in DPA Verti-Cut Unit - Model 03184

Verti-Cut Reel & Frame



All original equipment manufacturers names and part numbers are used for identification purposes only, and we are in no way implying that our products are original equipment parts. Prices subject to change without notice.



Replaces Toro Reelmaster 3100-D Parts

27in DPA Verti-Cut Unit - Model 03184

Verti-Cut Reel & Frame



| Item No | R&R Part No. | OEM Part No. | Description | Qty Req | Order Quantity |
|--|---------------------|--|---------------------------------------|---------|----------------|
| Overhaul Kits | | | | | |
| 1 | R114-5430 | 114-5430 | Overhaul Kit - Roller | 0 | |
| <i>Tech Note: Includes 4 ea.: R112-7494 Seals; 2 ea.: R302-5 Grease Zerks, R114-3717 Seals, R112-5290 Bearings & R114-3745 Locknuts:</i> | | | | | |
| Verti-Cut Blades | | | | | |
| 10 | R93-3038-03 | 93-3038, 93-3038-03 | Blade - Vertical Mower 1/16x7.25 | 19 | |
| 10 | R106-8625 | 106-8625 | Blade - Carbide Tip | 19 | |
| R&R Rollers | | | | | |
| 20 | R108-4293 | 108-4293 | Roller - Verti-Cut | 2 | |
| 21 | R117-3759 | 117-3759, 137-6124 | Roller Assy - 27" Front Solid 2 1/2 | 1 | |
| 22 | R117-3756 | 117-3756, 137-6123 | Roller Assy - 27" Rear Solid 2 1/2 | 1 | |
| Other Parts Available | | | | | |
| 70 | R112-8935 | 112-8935 | Frame - Center - 27 in Unit | 1 | |
| 71 | R117-3764 | 117-3764 | Plate-Side - LH - Verticut | 1 | |
| 72 | R117-3763 | 117-3763 | Plat E- Side - RH - Verticut | 1 | |
| 73 | R3231-25 | 01-173-0610, 30-9970, 3231-25, 3231-3, 900064P | Bolt - Carriage 3/8-16 x 1-1/4 | 2 | |
| 74 | R112-8936 | 112-8936 | Tube- Support - 27 in Units | 1 | |
| 75 | R112-8942 | 112-8942 | Front Grass Shield Assy - 27 in Units | 1 | |
| 76 | R112-8944-01 | 112-8944-01 | Rear Grass Shield Assy - 27 in Units | 1 | |

All original equipment manufacturers names and part numbers are used for identification purposes only, and we are in no way implying that our products are original equipment parts. Prices subject to change without notice.



Replaces Toro Reelmaster 3100-D Parts

27in DPA Verti-Cut Unit - Model 03184

Verti-Cut Reel & Frame



| Item No | R&R Part No. | OEM Part No. | Description | Qty Req | Order Quantity |
|---------|---------------------|--|------------------------------------|---------|----------------|
| 77 | R110-4088-03 | 110-4088-03, 119-8010-03 | Kickstand | 1 | |
| 78 | R110-4058 | 110-4058 | Bracket - Chain | 1 | |
| 79 | R104-8301 | 104-8301, 104-9301, 109-6658, 133-7570 | Locknut - 3/8-16 Nylon Flanged | 16 | |
| 80 | R107-7400 | 107-7400 | Pin - Lynch | 1 | |
| 81 | R117-3753-03 | 117-3753-03 | Scraper-Full Front Roller 2 1/2 in | 1 | |
| 82 | R117-0993 | 117-0993 | Scraper Rod Assy - 27 in | 1 | |
| 83 | R106-3924 | 106-3924 | Bracket - Rear Roller | 1 | |
| 84 | R107-2952 | 107-2952 | Bracket - Front Roller | 1 | |
| 85 | R107-4028 | 105-6757, 107-4028 | Seal - Grease | 2 | |
| 86 | R93-2489 | 93-2489 | Bearing - Reel | 2 | |
| 87 | R107-2954 | 107-2954 | Nut - Bearing Adjuster | 1 | |
| 88 | R112-6967 | 112-6967 | O-Ring | 2 | |
| 89 | R119-0614-01 | 119-0614-01 | Weight | 1 | |
| 90 | R101526 | 01-150-0970, 01-178-0620, 101526, 20-53-AGD, 321-11, 3224-8, 323-11, 323-12, 323-31, 323-4, 323-47 | Bolt - Hex HD 3/8-16 x 2-1/2 GR5 | 2 | |
| 91 | R107-2979 | 107-2979 | Bolt - Shoulder | 6 | |

All original equipment manufacturers names and part numbers are used for identification purposes only, and we are in no way implying that our products are original equipment parts. Prices subject to change without notice.



Replaces Toro Reelmaster 3100-D Parts

27in DPA Verti-Cut Unit - Model 03184

Verti-Cut Reel & Frame



| Item No | R&R Part No. | OEM Part No. | Description | Qty Req | Order Quantity |
|---------|------------------|--|----------------------------------|---------|----------------|
| 92 | R3234-11 | 3234-11 | Bolt - Hex Washer HD | 2 | |
| 93 | R3254-21 | 3254-21 | Washer - 1 in Internal Star | 2 | |
| 94 | R108-4289 | 108-4289 | Pin - Roller Mounting | 2 | |
| 95 | R108-4286 | 108-4286 | Bracket - Adj | 2 | |
| 96 | R3230-7 | 25-33-AGD, 3230-9 | Bolt - Carriage 5/16-18 x 2 1/2 | 4 | |
| 97 | R3290-355 | 01-159-0050, 3290-355, 58-5370 | Pin - Bridge - Snap | 2 | |
| 98 | R3296-59 | 3296-59 | Locknut - 3/8-16 Nylon Jam | 2 | |
| 99 | R453011 | 01-166-0100, 01-166-0120, 01-166-0270, 01-166-0500, 01-166-0600, 01-166-0620, 132-4593, 2356-3, 237-12, 24-10-AD, 24-11-AD, 24-11-BD, 24-12-AD, 24-12-BD, 30-9310, 32-8190, 3256-24, 3256-3, 3256-36, 3256-4, 453011, 47-9950, 48-9220, 513458, 7-0052 | Washer - Flat 3/8 SAE Y/Zinc | 8 | |
| 100 | R119-0626 | 119-0626 | Shim - Roller - 1/4 in - Slotted | 4 | |
| 101 | R107-3279 | 107-3279 | Bracket - Scraper - LH | 1 | |

All original equipment manufacturers names and part numbers are used for identification purposes only, and we are in no way implying that our products are original equipment parts. Prices subject to change without notice.



Replaces Toro Reelmaster 3100-D Parts

27in DPA Verti-Cut Unit - Model 03184

Verti-Cut Reel & Frame



| Item No | R&R Part No. | OEM Part No. | Description | Qty Req | Order Quantity |
|---------|------------------|--|--|---------|----------------|
| 102 | R107-3281 | 107-3281 | Bracket - Scraper - RH | 1 | |
| 103 | R108-4961 | 108-4961 | Tab - Stop - Shield | 1 | |
| 104 | R3256-74 | 3256-74 | Washer - Flat | 1 | |
| 105 | R108-4978 | 108-4978, 131-0516 | Insert - RH - Verti-Cut Shaft | 1 | |
| 106 | R94-2703 | 94-2703 | Plug - Plastic Spindle Housing | 1 | |
| 107 | R16-9759 | 16-9759 | Link Assy | 4 | |
| 108 | R93-6981 | 93-6981 | Spacer | 8 | |
| 109 | R93-8806 | 93-8806 | Washer-Hardened | 16 | |
| 110 | R108-4977 | 108-4977, 131-0515 | Insert - LH - Verti-Cut Shaft | 1 | |
| 111 | R3220-25 | 3220-25 | Nut - Jam 1-3/8-12 | 1 | |
| 112 | R105-0173 | 105-0173 | Washer - Verticut Shaft 1/4 in | 1 | |
| 113 | R117-3760 | 117-3760 | Shaft Only - V-Cut | 1 | |
| 114 | R105-0177 | 105-0177 | Spacer - Verticut Shaft 1/4 in | 1 | |
| 115 | R105-0172 | 105-0172 | Spacer - Verticut Shaft 1.2 in | 18 | |
| 116 | R3231-4 | 01-157-0440, 01-173-0612, 3231-4 | Bolt - Carriage 3/8-16 x 1-1/2 | 2 | |
| 117 | R322-16 | 322-16, Apr-00 | Bolt - Hex HD 5/16-18 x 1-1/8 | 2 | |
| 118 | R453013 | 01-166-0140, 01-166-0700, 3256-5, 80-4850 | Washer - Flat 7/16 | 8 | |
| 119 | R112-8918 | 112-8918 | Shaft - Long - Rear Roller - 27" Units | 1 | |

All original equipment manufacturers names and part numbers are used for identification purposes only, and we are in no way implying that our products are original equipment parts. Prices subject to change without notice.



Replaces Toro Reelmaster 3100-D Parts

27in DPA Verti-Cut Unit - Model 03184

Verti-Cut Reel & Frame



| Item No | R&R Part No. | OEM Part No. | Description | Qty Req | Order Quantity |
|---------|------------------|--|----------------------------------|---------|----------------|
| 120 | R93-6688 | 93-6688 | Decal - Warning | 1 | |
| 121 | R114-3745 | 114-3745, 114-5411 | Locknut - Bearing - Stainless | 2 | |
| 122 | R112-7494 | 112-7494 | Seal | 4 | |
| 123 | R112-5290 | 112-5290, 251--346, 251-346, 72-5430 | Bearing - Stainless | 2 | |
| 124 | R114-3717 | 114-3717 | Seal | 2 | |
| 125 | R119-0625 | 119-0625 | Shaft Assy - V-Cut | 1 | |
| 126 | R302-5 | 21-6010, 302-11, 302-37, 302-47, 302-5, 302-57, 302-58, 302-6, 31-0300, 32-9660, 60-0800, 62-3880, 92-4181 | Fitting - Grease | 2 | |
| 127 | R117-0957 | 117-0957 | Shaft - Front Roller - 27" Units | 1 | |
| 128 | R445722 | 30-8980, 32128-2, 32128-20, 32128-20, 445722 | Nut - Serrated Washer | 2 | |
| 129 | R170714 | 302-34, 302-39, 62-3520 | Fitting - Pressure Relief | 2 | |
| 130 | R3231-7 | 3231-33, 3231-7 | Bolt - Carriage 3/8-16 x 2-1/4 | 2 | |

All original equipment manufacturers names and part numbers are used for identification purposes only, and we are in no way implying that our products are original equipment parts. Prices subject to change without notice.



Replaces Toro Reelmaster 3100-D Parts

27in DPA Verti-Cut Unit - Model 03184

Verti-Cut Reel & Frame



| Item No | R&R Part No. | OEM Part No. | Description | Qty Req | Order Quantity |
|---------|------------------|--|------------------------------------|---------|----------------|
| 131 | R59-2580 | 59-2580 | Spacer - Wheel | 2 | |
| 132 | R3234-7 | 3234-7 | Bolt - Hex Washer HD 5/16-18 x 5/8 | 4 | |
| 133 | R3296-28 | 119-4154, 140-9234, 32127-34, 32128-7, 32128-8, 32136-7, 3296-28 | Nut - 1/2-20 ESNA Jam | 4 | |
| 134 | R104-8300 | 104-8300, 104-8300 , 119-4041 | Locknut - 5/16-18 Flanged Y/Zinc | 4 | |
| 135 | R112-7451 | 100-9429, 112-7451 | Bolt - Hex Tap 3/8-16 x 2-3/4 | 2 | |
| 136 | R322-14 | 01-150-0830, 01-178-0524, 30-8900, 322-14 | Bolt - Hex HD 5/16-18 x 3 GR5 | 1 | |
| 137 | R94-8945 | 94-8945 | Bushing - Bronze - Link Bar | 8 | |
| 138 | R323-6 | 01-150-0010, 01-178-0608, 20-47-AD, 20-47-AGD, 3224-2, 323-6, 49-3510, 908034P, 908332 | Bolt - Hex HD 3/8-16 x 1 GR5 YZ | 2 | |
| 139 | R32128-43 | 30-8990, 32128-43, 3290-357 | Nut - Flanged Whiz - 3/8-16 | 2 | |
| 140 | R107-7773 | 107-7773 | Bolt - Soc HD Cap 5/16-18 x 2-1/2 | 1 | |
| 141 | R107-7447 | 107-7447 | Set Screw - 1/4 x 1-1/4 Sq HD | 2 | |

All original equipment manufacturers names and part numbers are used for identification purposes only, and we are in no way implying that our products are original equipment parts. Prices subject to change without notice.