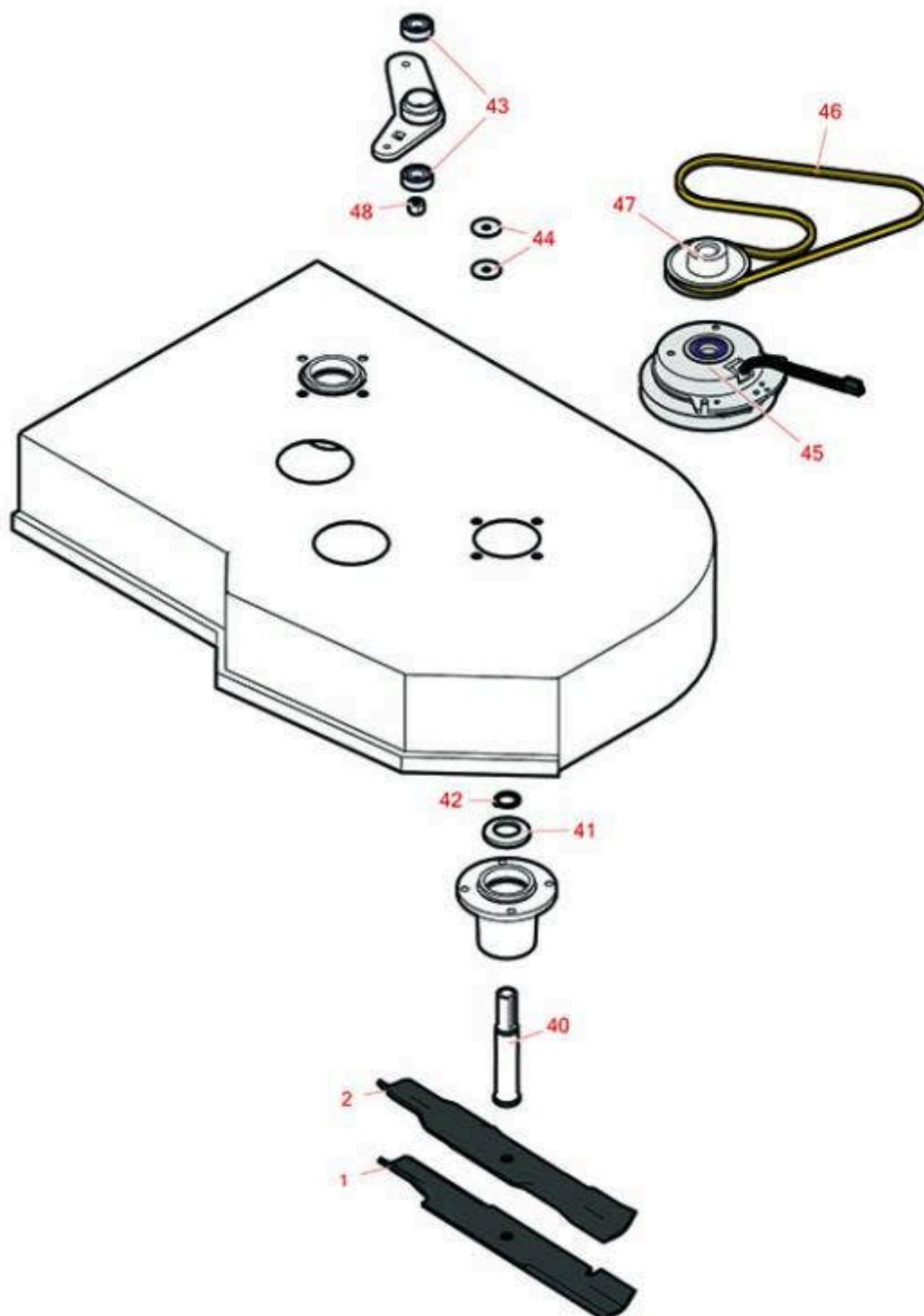




# Replaces John Deere 636M Quik-Trak Stand-On Mower Parts

Rotary Mower  
Deck Parts



All original equipment manufacturers names and part numbers are used for identification purposes only, and we are in no way implying that our products are original equipment parts. Prices subject to change without notice.



# Replaces John Deere 636M Quik-Trak Stand-On Mower Parts

Rotary Mower  
Deck Parts



Item No	R&R Part No.	OEM Part No.	Description	Qty Req	Order Quantity
---------	--------------	--------------	-------------	---------	----------------

## Blades

1	RRB3065-1800	TCU37208	Mower Blade - High-Lift 18 x 2.5in x 5/8 Mt Hole	2	
---	--------------	----------	--------------------------------------------------	---	--

*Detail Description: R&R Products rotary blades are manufactured in the USA with superior alloy steel and hardened for extended life. Lifetime guaranteed against defects in material and workmanship.:*

2	RRB5360-1800	UC10725	Mower Blade - Wave Mulcher 18 x 2.5in x 5/8 Mt Hole	2	
---	--------------	---------	-----------------------------------------------------	---	--

## Other Parts Available

40	RTCUC40290	TCU40290, UC14507	Shaft - Spindle	2	
----	------------	----------------------	-----------------	---	--

41	RTCUC40287	TCU40287, UC13505	Retainer - Grease	2	
----	------------	----------------------	-------------------	---	--

42	RC17964	C17964	Ring - Retaining HD	2	
----	---------	--------	---------------------	---	--

43	RTCUC34197	TCU34197	Bearing	2	
----	------------	----------	---------	---	--

44	RTCUC37610	TCU37610	Washer	4	
----	------------	----------	--------	---	--

45	RTCUC37594X	TCU37594	Clutch - Xtreme Pto Clutch	1	
----	-------------	----------	----------------------------	---	--

*Detail Description: Xtreme Clutches feature machined pulleys, Cool Coil technology, high performance bearings, stainless steel straps and rivets, Xtreme's Tough Wire Protection System and a replaceable bearing, the Xtreme design is pure performance in every aspect.:*

46	RTCUC37189	TCU37189, UC18232	Belt - Hyd Pump	1	
----	------------	----------------------	-----------------	---	--

47	RTCUC37595	TCU37595	Pulley	1	
----	------------	----------	--------	---	--

48	RK40014	K40014	Locknut - 1/2-13 All Metal Top Lock	1	
----	---------	--------	-------------------------------------	---	--

All original equipment manufacturers names and part numbers are used for identification purposes only, and we are in no way implying that our products are original equipment parts. Prices subject to change without notice.