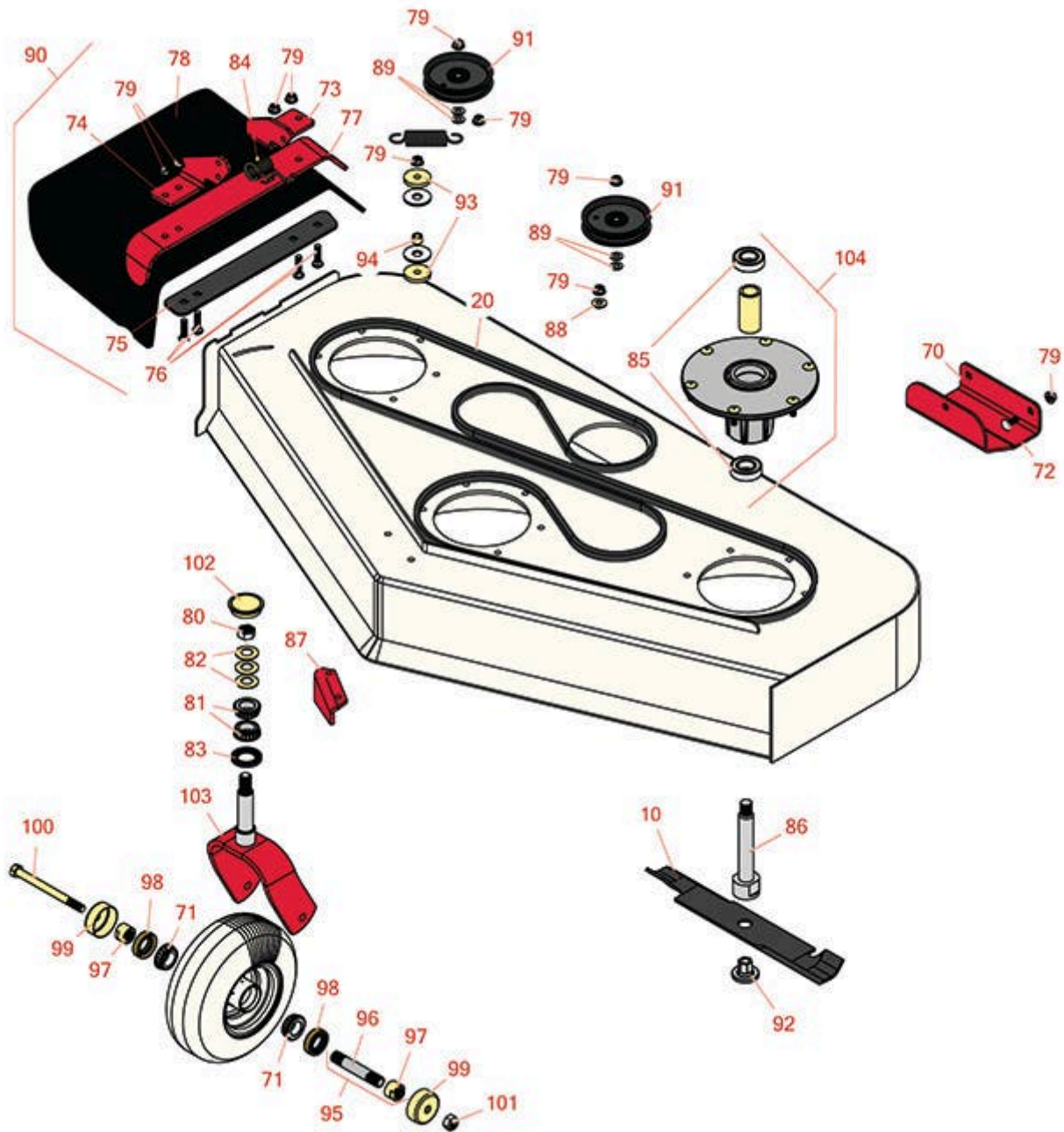




Replaces Toro GrandStand Mower Parts

Mower with 48in Deck - Model 72518

48in Deck Parts



All original equipment manufacturers names and part numbers are used for identification purposes only, and we are in no way implying that our products are original equipment parts. Prices subject to change without notice.



Replaces Toro GrandStand Mower Parts

Mower with 48in Deck - Model 72518

48in Deck Parts



Item No	R&R Part No.	OEM Part No.	Description	Qty Req	Order Quantity
10	RRB3065-1605	140-1243, 3065-1605	Mower Blade - High-Lift 16.5 x 2.5in x 15/16 Mt Hole	3	
Belts					
20	R131-1121	131-1121	Belt - V	1	
Other Parts Available					
70	R114-1908-01	114-1908-01	Skid	1	
71	R254-78	01-102-0060, 01-102-0130, 1-633585, 254-78, 32-7790, 32-9580, 93-4813	Tapered Bearing Cone	4	
72	R3231-2	01-157-0170, 01-173-0608, 3231-2, 3231-22, 3231-28, 900063P	Bolt - Carriage 3/8-16 x 1	2	
73	R108-4059-01	108-4059-01	Plate-Hinge, Rear	1	
74	R106-3253-01	106-3253-01	Plate-Hinge, Front	1	
75	R106-3248-03	106-3248-03	Strap - Discharge	1	
76	R3231-4	01-157-0440, 01-173-0612, 3231-4	Bolt - Carriage 3/8-16 x 1-1/2	4	
77	R106-3246-01	106-3246-01	Deflector	1	
78	R151416	108-5029, 110-0759, 151416	Deflector - Long	1	

All original equipment manufacturers names and part numbers are used for identification purposes only, and we are in no way implying that our products are original equipment parts. Prices subject to change without notice.



Replaces Toro GrandStand Mower Parts

Mower with 48in Deck - Model 72518

48in Deck Parts



Item No	R&R Part No.	OEM Part No.	Description	Qty Req	Order Quantity
79	R104-8301	104-8301, 104-9301, 109-6658, 133-7570	Locknut - 3/8-16 Nylon Flanged	12	
80	R3296-51	3296-51, 3296-81	Nut - Nylon Lock 3/4-10 Gr 8	2	
81	R254-94	1-543509, 254-94, 32-8090, 32-8240, 32-9640, 40440, 62-3330	Tapered Bearing Cone	4	
82	R1-633508	1-633508	Washer - Spring Disc	6	
83	R116-5647	116-5647	Seal - Grease	2	
84	R108-4052	108-4052	Spring - Torsion	1	
85	R116-0720	116-0720	Bearing - Ball - Special Triple Seal	6	
86	R138-6045	138-6045	Shaft - Spindle	3	
87	R107-8541-01	107-8541-01	Baffle - Discharge	1	
88	R98-5975	98-5975	Washer - Belleville	1	

All original equipment manufacturers names and part numbers are used for identification purposes only, and we are in no way implying that our products are original equipment parts. Prices subject to change without notice.



Replaces Toro GrandStand Mower Parts

Mower with 48in Deck - Model 72518

48in Deck Parts



Item No	R&R Part No.	OEM Part No.	Description	Qty Req	Order Quantity
89	R453011	01-166-0100, 01-166-0120, 01-166-0270, 01-166-0500, 01-166-0600, 01-166-0620, 132-4593, 2356-3, 237-12, 24-10-AD, 24-11-AD, 24-11-BD, 24-12-AD, 24-12-BD, 30-9310, 32-8190, 3256-24, 3256-3, 3256-36, 3256-4, 453011, 47-9950, 48-9220, 513458, 7-0052	Washer - Flat 3/8 SAE Y/Zinc	4	
90	R120-2451	120-2451, 121-5960	Deflector Assy	1	
91	R93-1622	93-1622	Idler Pulley - Flat 4 in Dia with .375 Bore	2	
92	R137-9787	137-9787	Bushing - Hex	3	
93	R110-9981	110-9981	Washer-Plain	2	
94	R1-413088	1-413088	Bushing - Lift Lever	1	
95	R126-5359	126-5359	Caster Axle Assy w/Bushing	2	
96	R103-3157	103-3157	Axle - Caster Wheel	2	
97	R103-3051	103-3051	Spacer - Nut - Hardened	4	
98	R103-0063	103-0063	Seal - Grease	4	

All original equipment manufacturers names and part numbers are used for identification purposes only, and we are in no way implying that our products are original equipment parts. Prices subject to change without notice.



Replaces Toro GrandStand Mower Parts

Mower with 48in Deck - Model 72518

48in Deck Parts



Item No	R&R Part No.	OEM Part No.	Description	Qty Req	Order Quantity
99	R103-2768	103-2768	Guard - Seal	4	
100	R325-20	01-150-1250, 01-178-0848, 325-20	Bolt - Hx HD 1/2-13 x 6	2	
101	R3296-25	30-3380, 32127-21, 32127-31, 3290-160, 3290-33, 3296-13, 3296-25, 3296-45, 329645	Locknut - 1/2-13 Heavy ESNA	2	
102	R103-4882	103-4882	Grease Cap - Castor	2	
103	R121-7988-01	121-7988-01	Fork - Caster	2	
104	R137-9780	137-9780	Spindle Assy	3	

All original equipment manufacturers names and part numbers are used for identification purposes only, and we are in no way implying that our products are original equipment parts. Prices subject to change without notice.