

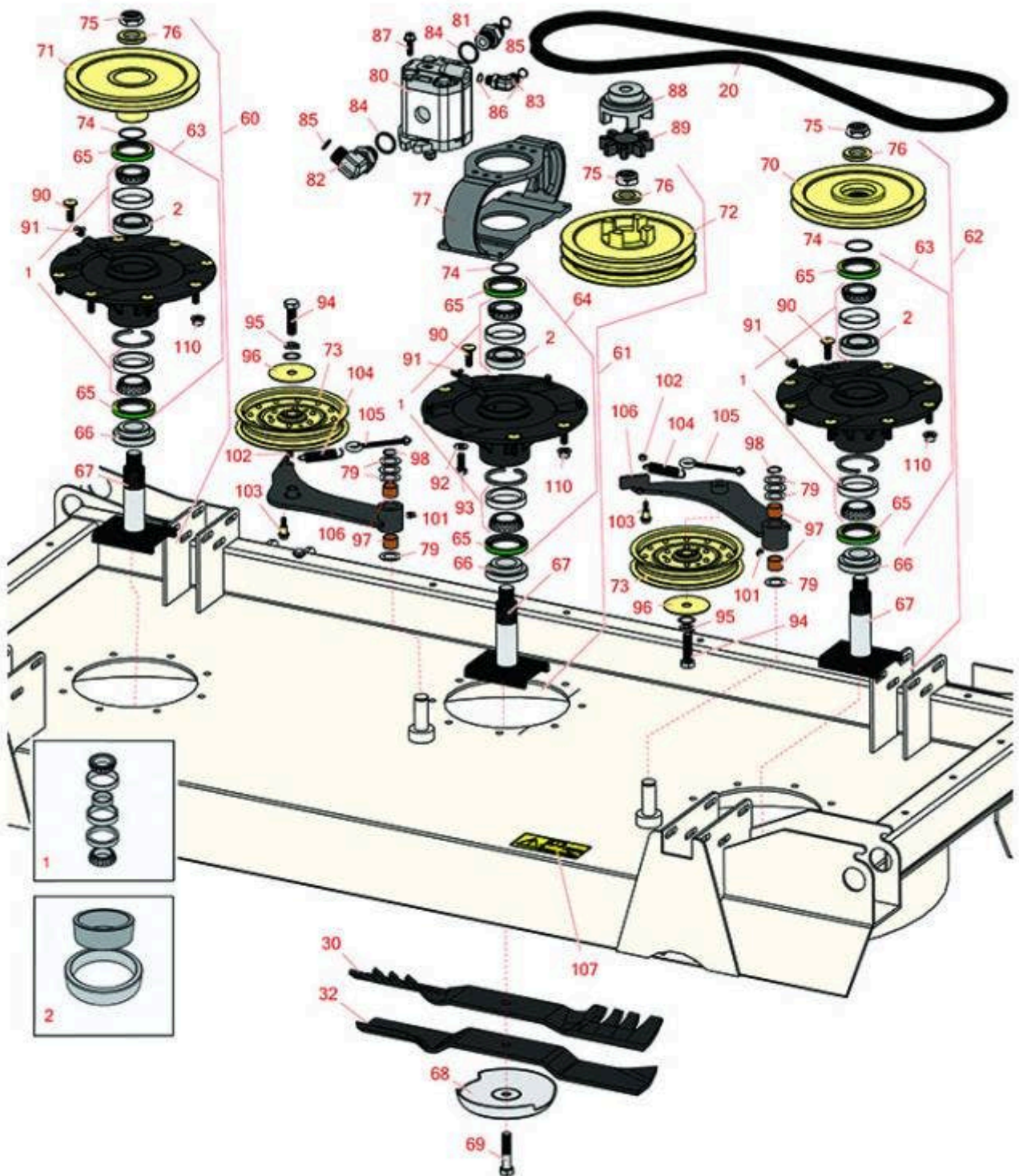


# Replaces Toro Groundsmaster 4100-D

## Parts

Rotary Mower - Model 30449

Front Deck Hydraulics and Spindles



All original equipment manufacturers names and part numbers are used for identification purposes only, and we are in no way implying that our products are original equipment parts. Prices subject to change without notice.



# Replaces Toro Groundsmaster 4100-D Parts

Rotary Mower - Model 30449  
Front Deck Hydraulics and Spindles



Item No	R&R Part No.	OEM Part No.	Description	Qty Req	Order Quantity
<b>Overhaul Kits</b>					
1	<b>R110-8297</b>	110-8297, 26-1830	Bearing Set w/Retaining Rings - Spindle	3	
2	<b>R104-3549</b>	104-3549	Spacer Set - Spindle Bearing	3	
<b>Belts</b>					
20	<b>R108-8077</b>	105-7438, 108-8077	V-Belt - Deck	2	
<b>Rotary Blades</b>					
30	<b>R107-0215-03</b>	107-0215-03	Mower Blade - Mulcher - 19 in	3	
32	<b>R106-7166-03</b>	106-7166-03	Mower Blade - Combo - 19 in	3	
<b>Other Parts Available</b>					
60	<b>R119-4549</b>	104-3531, 119-4549, 139-1038	High Driven Spindle Assy	1	
61	<b>R119-5298</b>	106-4270, 119-5298	Double-Driving Spindle Assy	1	
62	<b>R119-4776</b>	104-3532, 119-4776	Spindle Assy	1	
63	<b>R119-4775</b>	119-4775	Spindle Housing Assy	2	
64	<b>R119-4546</b>	104-3552, 119-3552, 119-4546	Spindle Housing Assy	1	
65	<b>R253-154</b>	253-154	Seal - Spindle	6	
66	<b>R92-9800</b>	69-6950, 69-6980, 92-9800	Spacer - Spindle	3	
67	<b>R104-3554</b>	104-3554	Shaft - Spindle Assy.	3	

All original equipment manufacturers names and part numbers are used for identification purposes only, and we are in no way implying that our products are original equipment parts. Prices subject to change without notice.



# Replaces Toro Groundsmaster 4100-D Parts

Rotary Mower - Model 30449  
Front Deck Hydraulics and Spindles



Item No	R&R Part No.	OEM Part No.	Description	Qty Req	Order Quantity
68	<b>R72-9361</b>	27-1000, 27-1001, 72-9360, 72-9361	Cup - Anti-Scalp	3	
69	<b>R92-5816</b>	92-5816	Bolt - Hex HD 1/2-20 x 2-1/4	3	
70	<b>R104-3546</b>	104-3546	Pulley - Lower Driven	1	
71	<b>R104-3548</b>	104-3548	Pulley - Higher Driven	1	
72	<b>R106-4269</b>	106-4269	Double Pulley Assy - Drive	1	
73	<b>R110-9596</b>	110-9596, 132-9421	Pulley- Flat Idler	2	
74	<b>R106-7159</b>	106-7159	O-Ring	3	
75	<b>R32127-46</b>	32127-46, 3296-60	Locknut	3	
76	<b>R104-8322</b>	104-8322, 120-5576	Washer - Spindle Shaft Hardened	3	
77	<b>R106-4268</b>	106-4268	Mount - Motor Drive	1	
79	<b>R3-6498</b>	3--6498, 3-6498, 47-8270	Washer - Thrust	8	
80	<b>R99-5489</b>	99-5489	Hydraulic Motor	1	
81	<b>R340-8</b>	340-8	Adapter	1	
82	<b>R340-139</b>	340-139	Hydraulic Fitting - 90 Deg	1	
83	<b>R340-77</b>	340-100, 340-77, 95-7889	Hydraulic Fitting	1	
84	<b>R237-81</b>	237-81, 237.81, 327-81	O-Ring	2	

All original equipment manufacturers names and part numbers are used for identification purposes only, and we are in no way implying that our products are original equipment parts. Prices subject to change without notice.



# Replaces Toro Groundsmaster 4100-D Parts

Rotary Mower - Model 30449  
Front Deck Hydraulics and Spindles



Item No	R&R Part No.	OEM Part No.	Description	Qty Req	Order Quantity
85	<b>R237-65</b>	237-65, 237.65	O-Ring	2	
86	<b>R237-42</b>	237-42, 31-4160	O-Ring	2	
87	<b>R3234-42</b>	3234-42	Bolt - 3/8-16 x 1 Hx HD Fl	2	
88	<b>R104-3541</b>	104-3541	Hub - Drive	1	
89	<b>R104-3542</b>	104-3542	Spider	1	
90	<b>R114-8195</b>	114-8195, R & R ONLY	Bolt- Ribbed Neck	20	
91	<b>R302-60</b>	302-60	Zerk - Grease 90 Deg.	3	
92	<b>R453011</b>	01-166-0100, 01-166-0120, 01-166-0270, 01-166-0500, 01-166-0600, 01-166-0620, 132-4593, 2356-3, 237-12, 24-10-AD, 24-11-AD, 24-11-BD, 24-12-AD, 24-12-BD, 30-9310, 32-8190, 3256-24, 3256-3, 3256-36, 3256-4, 453011, 47-9950, 48-9220, 513458, 7-0052	Washer - Flat 3/8 SAE Y/Zinc	4	

All original equipment manufacturers names and part numbers are used for identification purposes only, and we are in no way implying that our products are original equipment parts. Prices subject to change without notice.



# Replaces Toro Groundsmaster 4100-D Parts



Rotary Mower - Model 30449  
Front Deck Hydraulics and Spindles

Item No	R&R Part No.	OEM Part No.	Description	Qty Req	Order Quantity
93	<b>R323-6</b>	01-150-0010, 01-178-0608, 20-47-AD, 20-47-AGD, 3224-2, 323-6, 49-3510, 908034P, 908332	Bolt - Hex HD 3/8-16 x 1 GR5 YZ	4	
94	<b>R325-7</b>	01-150-0380, 01-178-0814, 3226-3, 325-7, 48-9490	Bolt - 1/2-13 x 1 3/4 Hex HD Gr 5	2	
95	<b>R3253-7</b>	01-166-0030, 01-166-0080, 01-166-0290, 01-166-0810, 23-13-GD, 3253-7, 48-9380	Washer - Lock 1/2	2	
96	<b>R100-3102</b>	100-3102	Washer-Flat	2	
97	<b>R256-76</b>	256-76	Bushing	4	
98	<b>R458013</b>	30-0580, 32120-72, 458013, 93-2525, 936125	Ring - Retaining	2	

All original equipment manufacturers names and part numbers are used for identification purposes only, and we are in no way implying that our products are original equipment parts. Prices subject to change without notice.



# Replaces Toro Groundsmaster 4100-D Parts

Rotary Mower - Model 30449  
Front Deck Hydraulics and Spindles



Item No	R&R Part No.	OEM Part No.	Description	Qty Req	Order Quantity
101	<b>R302-5</b>	21-6010, 302-11, 302-37, 302-47, 302-5, 302-57, 302-58, 302-6, 31-0300, 32-9660, 60-0800, 62-3880, 92-4181	Fitting - Grease	2	
102	<b>R3296-56</b>	3296-56	Nut - Lock - 1/4-20 ESNA Jam	2	
103	<b>R104-0858</b>	104-0858	Bolt - Shoulder	2	
104	<b>R107938</b>	107938	Spring - Extension	2	
105	<b>R68-0090</b>	68-0090	Screw - Adjusting	2	
106	<b>R110-6128</b>	110-6128	Idler Arm Assy	2	
107	<b>R93-7818</b>	93-7818	Decal - Blade Torque	1	
110	<b>R104-8301</b>	104-8301, 104-9301, 109-6658, 133-7570	Locknut - 3/8-16 Nylon Flanged	20	

All original equipment manufacturers names and part numbers are used for identification purposes only, and we are in no way implying that our products are original equipment parts. Prices subject to change without notice.