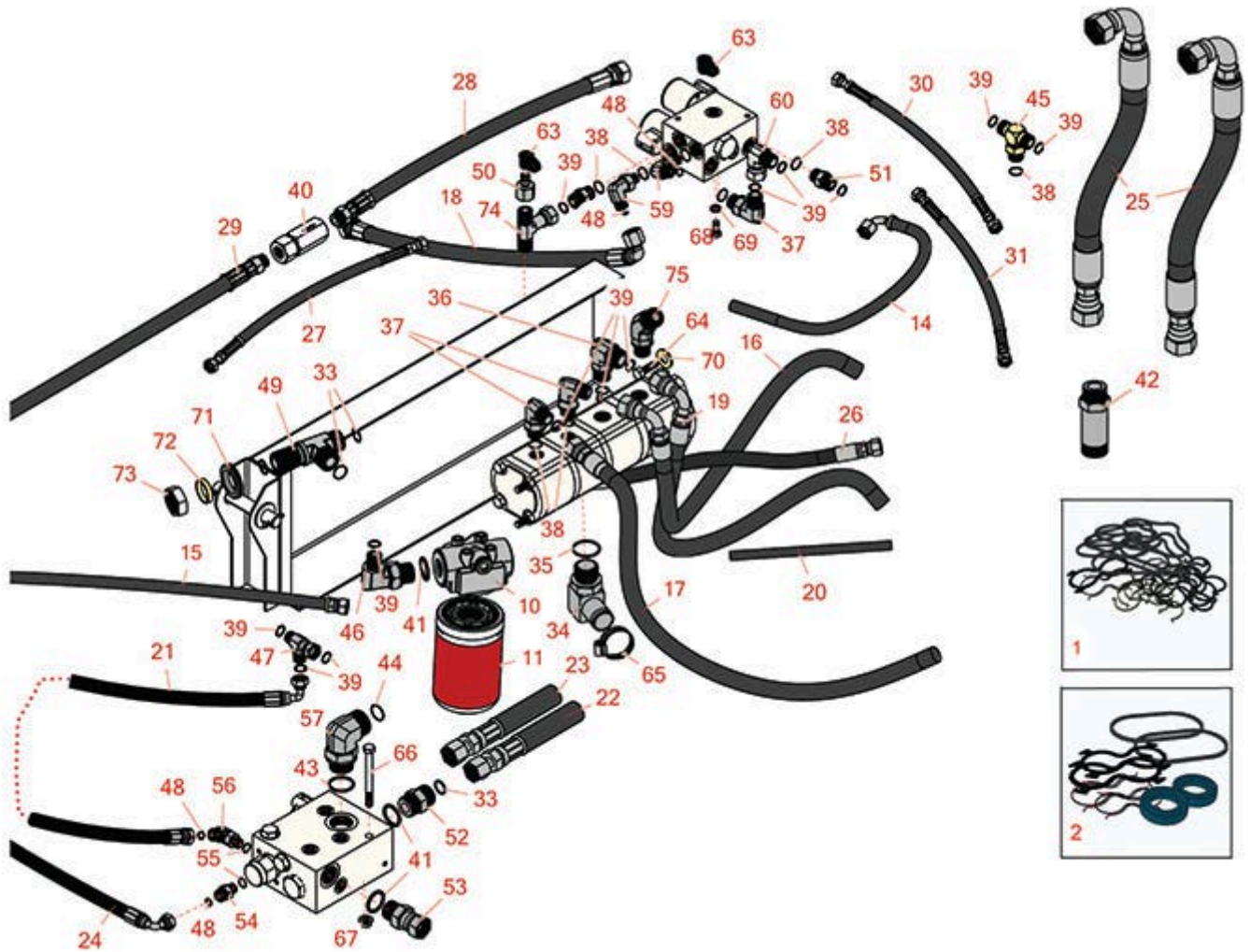




# Replaces Toro Groundsmaster 4000-D Parts

Rotary Mower - Model 30448  
Pump Installation and Filter



All original equipment manufacturers names and part numbers are used for identification purposes only, and we are in no way implying that our products are original equipment parts. Prices subject to change without notice.



# Replaces Toro Groundsmaster 4000-D Parts

Rotary Mower - Model 30448  
Pump Installation and Filter



Item No	R&R Part No.	OEM Part No.	Description	Qty Req	Order Quantity
<b>Overhaul Kit</b>					
1	<b>R115-3776</b>	115-3776	Seal Kit - 4 Stage Pump	1	
2	<b>R115-4110</b>	115-4110	Seal Kit - Hyd Fan Motor	1	
<b>Filters</b>					
10	<b>R93-2242</b>	93-2242	Oil Filter & Head Assy - Hyd	1	
11	<b>R75-1310</b>	13170210, 75-1310	Baldwin Hyd Oil Filter	1	
11	<b>RRF10623</b>	13170210, 75-1310	SilverGuard Oil Filter - Hyd	1	
<b>Hoses</b>					
14	<b>R115-8465</b>	115-8465	Hydraulic Hose Assy	1	
15	<b>R115-8476</b>	115-8476	Hydraulic Hose Assy	1	
16	<b>R105-3985</b>	105-3985	Hydraulic Hose Assy	1	
17	<b>R95-3737</b>	95-3737	Hydraulic Hose Assy	1	
18	<b>R114-9772</b>	114-9772	Hydraulic Hose Assy	1	
19	<b>R114-3837</b>	114-3837	Hydraulic Hose Assy	1	
20	<b>R100-5649</b>	100-5649	Hose	1	
21	<b>R66-8490</b>	66-8490	Hydraulic Hose Assy	1	
22	<b>R115-8484</b>	115-8484	Hydraulic Hose Assy	1	
23	<b>R115-8483</b>	115-8483	Hydraulic Hose Assy	1	
24	<b>R110-6106</b>	110-6106	Hydraulic Hose Assy	1	
25	<b>R115-3771</b>	115-3771	Hydraulic Hose Assy	2	
26	<b>R100-5645</b>	100-5645	Hydraulic Hose Assy	1	

All original equipment manufacturers names and part numbers are used for identification purposes only, and we are in no way implying that our products are original equipment parts. Prices subject to change without notice.



# Replaces Toro Groundsmaster 4000-D Parts

Rotary Mower - Model 30448  
Pump Installation and Filter



Item No	R&R Part No.	OEM Part No.	Description	Qty Req	Order Quantity
27	<b>R100-5643</b>	100-5643	Hydraulic Hose Assy	1	
28	<b>R100-5617</b>	100-5617	Hydraulic Hose Assy	1	
29	<b>R104-2237</b>	104-2237	Hydraulic Hose Assy	1	
30	<b>R100-5570</b>	100-5570	Hydraulic Hose Assy	1	
31	<b>R100-5641</b>	100-5641	Hydraulic Hose Assy	1	

## Other Parts Available

33	<b>R237-58</b>	237-58	O-Ring	5	
34	<b>R92-7526</b>	92-7526	Hydraulic Fitting - 90 Deg	1	
35	<b>R237-101</b>	237-101	O-Ring	1	
36	<b>R340-16</b>	100-8255, 340-16	Hydraulic Fitting	1	
37	<b>R340-98</b>	340-98	Hydraulic Fitting	3	
38	<b>R237-79</b>	237-79	O-Ring	12	
39	<b>R237-30</b>	23-6320, 237-30	O-Ring - Seal	18	
40	<b>R100-5600</b>	100-5600	Valve-Check	1	
41	<b>R237-81</b>	237-81, 237.81, 327-81	O-Ring	4	
42	<b>R100-5565</b>	100-5565	Hydraulic Fitting	2	
43	<b>R237-146</b>	237-146, 340-146	O-Ring	3	
44	<b>R340-65</b>	340-65	O-Ring	3	
45	<b>R340-157</b>	340-157	Hydraulic Fitting - Tee	1	

All original equipment manufacturers names and part numbers are used for identification purposes only, and we are in no way implying that our products are original equipment parts. Prices subject to change without notice.



# Replaces Toro Groundsmaster 4000-D Parts

*Rotary Mower - Model 30448  
Pump Installation and Filter*



Item No	R&R Part No.	OEM Part No.	Description	Qty Req	Order Quantity
46	<b>R340-131</b>	340-131	Hydraulic Fitting - 90 Deg	1	
47	<b>R340-115</b>	340-115, 96-0849	Fitting - Tee	1	
48	<b>R237-22</b>	107-8844, 237-22, 237-78	O-Ring	5	
49	<b>R104-3558</b>	104-3558	Fitting-Bulkhead	1	
50	<b>R100-5616</b>	100-5616	Hydraulic Fitting	1	
51	<b>R340-4</b>	340-4	Hydraulic Fitting - Male Connector	2	
52	<b>R340-9</b>	340-9	Fitting - Straight Connector	1	
53	<b>R106-2009</b>	106-2009	Hydraulic Fitting - Swivel	1	
54	<b>R340-2</b>	340-2, 60-1920	Hydraulic Fitting - Striaight	1	
55	<b>R237-42</b>	237-42, 31-4160	O-Ring	9	
56	<b>R340-77</b>	340-100, 340-77, 95-7889	Hydraulic Fitting	1	
57	<b>R340-129</b>	340-129	Hydraulic Fitting - 90 Deg	1	
59	<b>R340-18</b>	340-18	Hydraulic Fitting	1	
60	<b>R94-6031</b>	94-6031	Hydraulic Fitting	1	
63	<b>R354-79</b>	354-79	Cap-Dust	2	

All original equipment manufacturers names and part numbers are used for identification purposes only, and we are in no way implying that our products are original equipment parts. Prices subject to change without notice.



# Replaces Toro Groundsmaster 4000-D Parts

Rotary Mower - Model 30448  
Pump Installation and Filter



Item No	R&R Part No.	OEM Part No.	Description	Qty Req	Order Quantity
64	<b>R400260</b>	01-178-0605, 18-4100, 19-8270, 323-3, 323-33, 323-34, 323-5, 3235-5	Bolt - Hex HD 3/8-16 x 7/8	2	
65	<b>R2412-111</b>	2412-111	Clamp - Hose - Worm	2	
66	<b>R323-42</b>	01-178-0630, 323-42	Bolt - Hx HD 3/8-16 x 3 3/4	1	
67	<b>R104-8301</b>	104-8301, 104-9301, 109-6658, 133-7570	Locknut - 3/8-16 Nylon Flanged	3	
68	<b>R322-3</b>	01-150-1420, 01-178-0506, 20-24-AD, 20-24-AGD, 322-3, 48-9270, 513339, 908017P	Bolt - Hex HD 5/16-18 x 3/4	2	
69	<b>R3253-4</b>	01-166-0110, 01-166-0510, 23-10-GD, 24-7170, 30-8520, 3253-4, 42-9850, 48-9350, 48-9360, 48-9570, 68-9420, 99-7577	Washer - Lock 5/16 Zinc	2	
70	<b>R87-7270-01</b>	87-7270, 87-7270-01	Washer - Flat 1/2	2	
71	<b>R240-7</b>	240-7	Grommet - Rubber - 2 in OD	2	

All original equipment manufacturers names and part numbers are used for identification purposes only, and we are in no way implying that our products are original equipment parts. Prices subject to change without notice.



# Replaces Toro Groundsmaster 4000-D Parts

*Rotary Mower - Model 30448  
Pump Installation and Filter*



Item No	R&R Part No.	OEM Part No.	Description	Qty Req	Order Quantity
72	<b>R69-8900</b>	69-8900	Spacer	2	
73	<b>R340-126</b>	340-126	Nut - Bulkhead	2	
74	<b>R93-6810</b>	93-6810	Fitting - Tee	1	
75	<b>R115-3768</b>	115-3768	Hydraulic Fitting - 45 Deg	1	

All original equipment manufacturers names and part numbers are used for identification purposes only, and we are in no way implying that our products are original equipment parts. Prices subject to change without notice.