

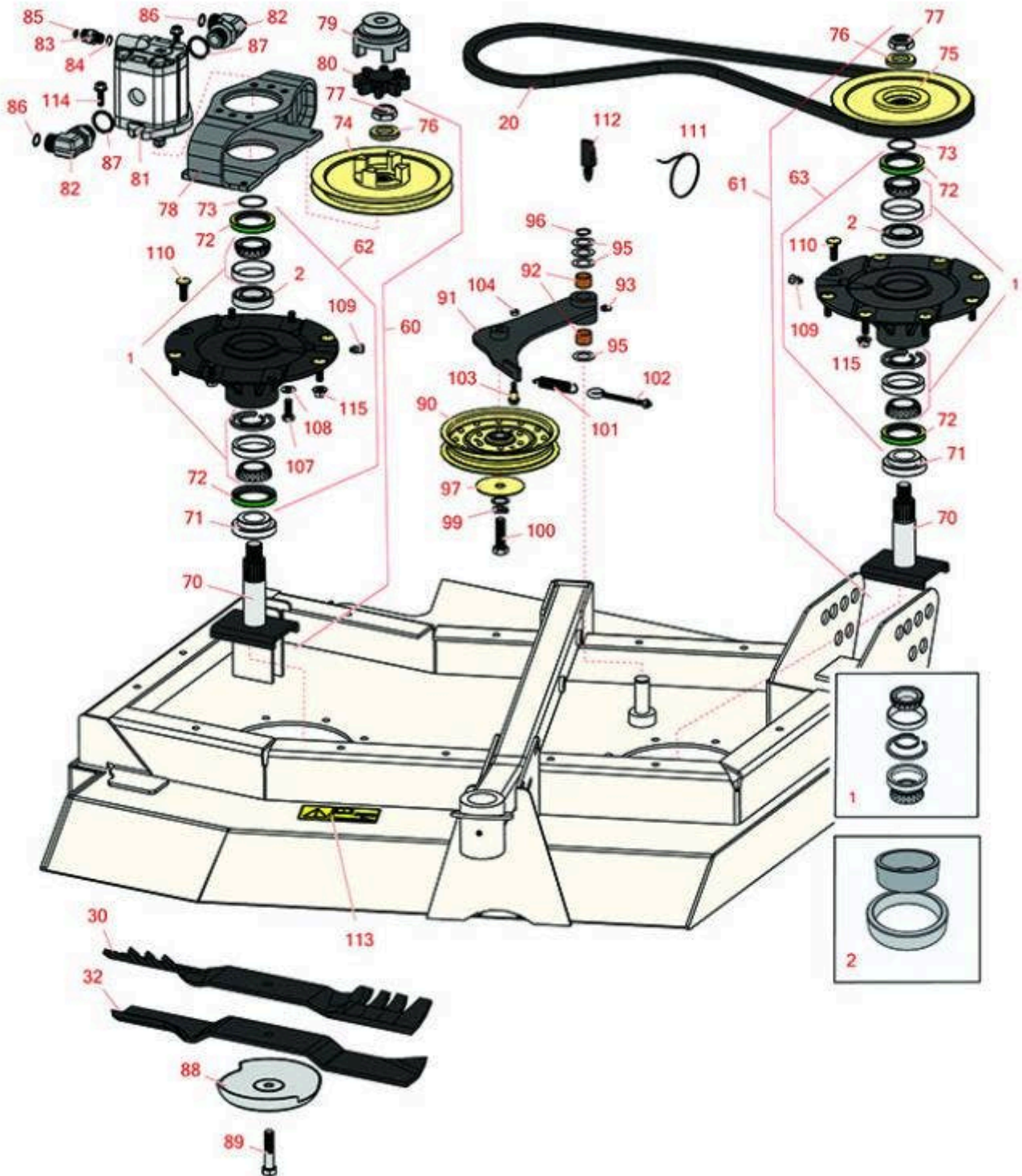


Replaces Toro Groundsmaster 4100-D

Parts

Rotary Mower - Model 30413

Left-Hand Deck Lift Arms and Spindle



All original equipment manufacturers names and part numbers are used for identification purposes only, and we are in no way implying that our products are original equipment parts. Prices subject to change without notice.



Replaces Toro Groundsmaster 4100-D Parts

Rotary Mower - Model 30413
Left-Hand Deck Lift Arms and Spindle



| Item No | R&R Part No. | OEM Part No. | Description | Qty Req | Order Quantity |
|------------------------------|---------------------|------------------------------------|---|---------|----------------|
| Overhaul Kits | | | | | |
| 1 | R110-8297 | 110-8297, 26-1830 | Bearing Set w/Retaining Rings - Spindle | 2 | |
| 2 | R104-3549 | 104-3549 | Spacer Set - Spindle Bearing | 2 | |
| Belts | | | | | |
| 20 | R108-8077 | 105-7438, 108-8077 | V-Belt - Deck | 1 | |
| Rotary Blades | | | | | |
| 30 | R107-0215-03 | 107-0215-03 | Mower Blade - Mulcher - 19 in | 2 | |
| 32 | R106-7166-03 | 106-7166-03 | Mower Blade - Combo - 19 in | 2 | |
| Other Parts Available | | | | | |
| 60 | R119-4547 | 104-3529, 119-4547, 139-1035 | Driving Spindle Assy | 1 | |
| 61 | R119-4776 | 104-3532, 119-4776 | Spindle Assy | 1 | |
| 62 | R119-4546 | 104-3552, 119-3552, 119-4546 | Spindle Housing Assy | 1 | |
| 63 | R119-4775 | 119-4775 | Spindle Housing Assy | 1 | |
| 70 | R104-3554 | 104-3554 | Shaft - Spindle Assy. | 2 | |
| 71 | R92-9800 | 69-6950, 69-6980, 92-9800 | Spacer - Spindle | 2 | |
| 72 | R253-154 | 253-154 | Seal - Spindle | 4 | |
| 73 | R106-7159 | 106-7159 | O-Ring | 2 | |
| 74 | R104-3545 | 104-3545 | Pulley - Drive | 1 | |

All original equipment manufacturers names and part numbers are used for identification purposes only, and we are in no way implying that our products are original equipment parts. Prices subject to change without notice.



Replaces Toro Groundsmaster 4100-D Parts

*Rotary Mower - Model 30413
Left-Hand Deck Lift Arms and Spindle*



| Item No | R&R Part No. | OEM Part No. | Description | Qty Req | Order Quantity |
|---------|------------------|---|---------------------------------|---------|----------------|
| 75 | R104-3546 | 104-3546 | Pulley - Lower Driven | 1 | |
| 76 | R104-8322 | 104-8322, 120-5576 | Washer - Spindle Shaft Hardened | 2 | |
| 77 | R32127-46 | 32127-46, 3296-60 | Locknut | 2 | |
| 78 | R104-3544 | 104-3544 | Mount - Motor Drive | 1 | |
| 79 | R104-3541 | 104-3541 | Hub - Drive | 1 | |
| 80 | R104-3542 | 104-3542 | Spider | 1 | |
| 81 | R99-5489 | 99-5489 | Hydraulic Motor | 1 | |
| 82 | R340-139 | 340-139 | Hydraulic Fitting - 90 Deg | 2 | |
| 83 | R340-2 | 340-2, 60-1920 | Hydraulic Fitting - Striaight | 1 | |
| 84 | R237-42 | 237-42, 31-4160 | O-Ring | 1 | |
| 85 | R237-22 | 107-8844, 237-22, 237-78 | O-Ring | 1 | |
| 86 | R237-65 | 237-65, 237.65 | O-Ring | 2 | |
| 87 | R237-81 | 237-81, 237.81, 327-81 | O-Ring | 2 | |
| 88 | R72-9361 | 27-1000, 27-1001, 72-9360, 72-9361 | Cup - Anti-Scalp | 2 | |
| 89 | R92-5816 | 92-5816 | Bolt - Hex HD 1/2-20 x 2-1/4 | 2 | |
| 90 | R110-9596 | 110-9596, 132-9421 | Pulley- Flat Idler | 1 | |

All original equipment manufacturers names and part numbers are used for identification purposes only, and we are in no way implying that our products are original equipment parts. Prices subject to change without notice.



Replaces Toro Groundsmaster 4100-D Parts

Rotary Mower - Model 30413
Left-Hand Deck Lift Arms and Spindle



| Item No | R&R Part No. | OEM Part No. | Description | Qty Req | Order Quantity |
|---------|------------------|--|-----------------------------------|---------|----------------|
| 91 | R110-6128 | 110-6128 | Idler Arm Assy | 1 | |
| 92 | R256-76 | 256-76 | Bushing | 2 | |
| 93 | R302-5 | 21-6010, 302-11, 302-37, 302-47, 302-5, 302-57, 302-58, 302-6, 31-0300, 32-9660, 60-0800, 62-3880, 92-4181 | Fitting - Grease | 1 | |
| 95 | R3-6498 | 3--6498, 3-6498, 47-8270 | Washer - Thrust | 4 | |
| 96 | R458013 | 30-0580, 32120-72, 458013, 93-2525, 936125 | Ring - Retaining | 1 | |
| 97 | R100-3102 | 100-3102 | Washer-Flat | 1 | |
| 99 | R3253-7 | 01-166-0030, 01-166-0080, 01-166-0290, 01-166-0810, 23-13-GD, 3253-7, 48-9380 | Washer - Lock 1/2 | 1 | |
| 100 | R325-7 | 01-150-0380, 01-178-0814, 3226-3, 325-7, 48-9490 | Bolt - 1/2-13 x 1 3/4 Hex HD Gr 5 | 1 | |
| 101 | R107938 | 107938 | Spring - Extension | 1 | |

All original equipment manufacturers names and part numbers are used for identification purposes only, and we are in no way implying that our products are original equipment parts. Prices subject to change without notice.



Replaces Toro Groundsmaster 4100-D Parts



*Rotary Mower - Model 30413
Left-Hand Deck Lift Arms and Spindle*

| Item No | R&R Part No. | OEM Part No. | Description | Qty Req | Order Quantity |
|---------|------------------|--|---------------------------------|---------|----------------|
| 102 | R68-0090 | 68-0090 | Screw - Adjusting | 1 | |
| 103 | R104-0858 | 104-0858 | Bolt - Shoulder | 1 | |
| 104 | R3296-56 | 3296-56 | Nut - Lock - 1/4-20 ESNA Jam | 1 | |
| 107 | R323-6 | 01-150-0010, 01-178-0608, 20-47-AD, 20-47-AGD, 3224-2, 323-6, 49-3510, 908034P, 908332 | Bolt - Hex HD 3/8-16 x 1 GR5 YZ | 4 | |
| 108 | R453011 | 01-166-0100, 01-166-0120, 01-166-0270, 01-166-0500, 01-166-0600, 01-166-0620, 132-4593, 2356-3, 237-12, 24-10-AD, 24-11-AD, 24-11-BD, 24-12-AD, 24-12-BD, 30-9310, 32-8190, 3256-24, 3256-3, 3256-36, 3256-4, 453011, 47-9950, 48-9220, 513458, 7-0052 | Washer - Flat 3/8 SAE Y/Zinc | 4 | |
| 109 | R302-60 | 302-60 | Zerk - Grease 90 Deg. | 2 | |
| 110 | R114-8195 | 114-8195, R & R ONLY | Bolt- Ribbed Neck | 12 | |

All original equipment manufacturers names and part numbers are used for identification purposes only, and we are in no way implying that our products are original equipment parts. Prices subject to change without notice.



Replaces Toro Groundsmaster 4100-D Parts



*Rotary Mower - Model 30413
Left-Hand Deck Lift Arms and Spindle*

| Item No | R&R Part No. | OEM Part No. | Description | Qty Req | Order Quantity |
|---------|------------------|---|--------------------------------|---------|----------------|
| 111 | R3M41933 | | Cable Ties - 6" Bulk Pkg/100 | 1 | |
| 112 | R74-5950 | 249-48, 74-5950 | Latch - Swell | 4 | |
| 113 | R93-7818 | 93-7818 | Decal - Blade Torque | 1 | |
| 114 | R3234-42 | 3234-42 | Bolt - 3/8-16 x 1 Hx HD Fl | 2 | |
| 115 | R104-8301 | 104-8301, 104-9301, 109-6658, 133-7570 | Locknut - 3/8-16 Nylon Flanged | 12 | |

All original equipment manufacturers names and part numbers are used for identification purposes only, and we are in no way implying that our products are original equipment parts. Prices subject to change without notice.