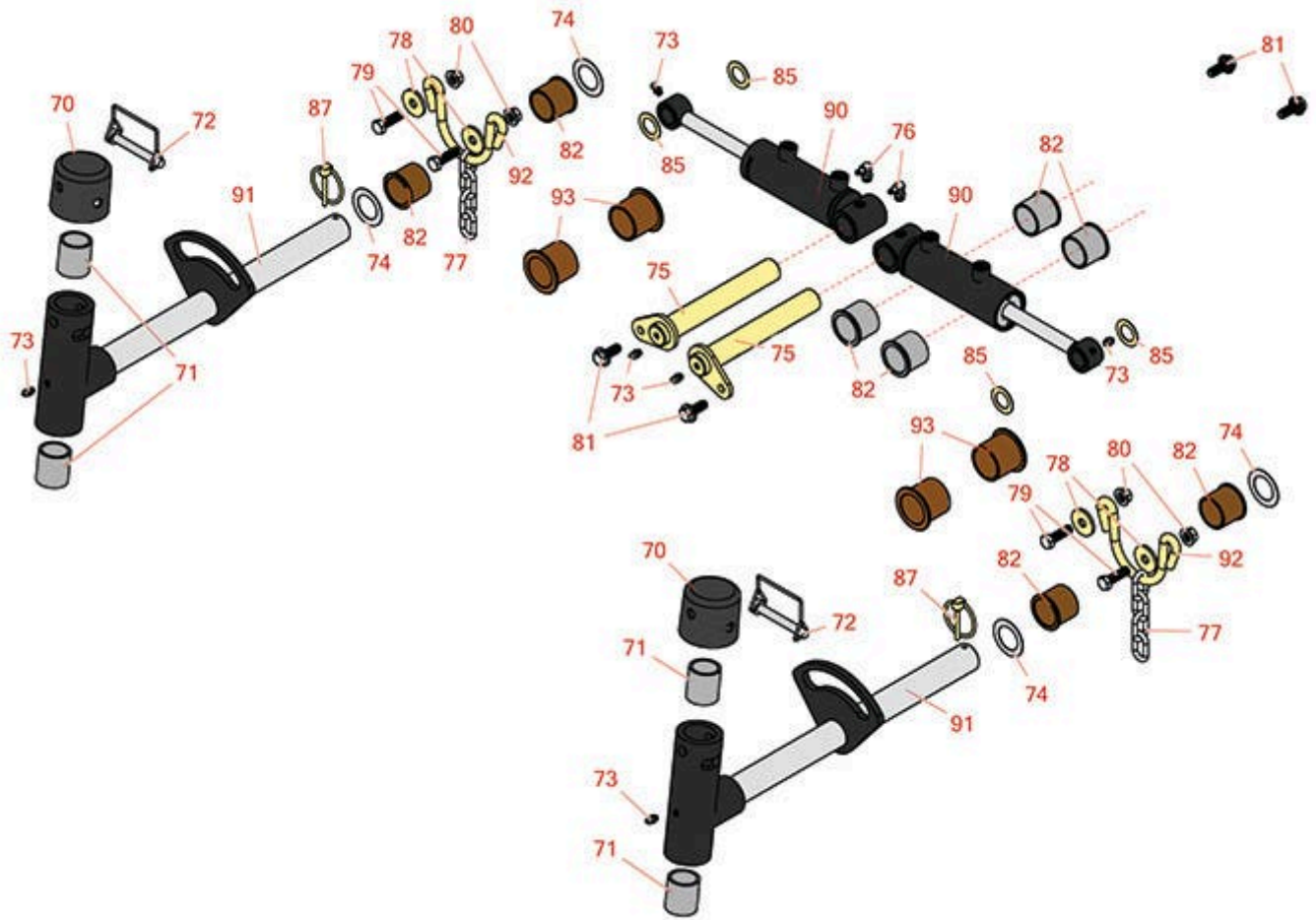




# Replaces Toro Reelmaster 3575-D Parts

*Traction Unit*

*2 & 3 Lift Arm & Hydraulics*



All original equipment manufacturers names and part numbers are used for identification purposes only, and we are in no way implying that our products are original equipment parts. Prices subject to change without notice.



# Replaces Toro Reelmaster 3575-D Parts

Traction Unit

2 & 3 Lift Arm & Hydrualics



Item No	R&R Part No.	OEM Part No.	Description	Qty Req	Order Quantity
---------	--------------	--------------	-------------	---------	----------------

## Other Parts Available

70	<b>R107-4027</b>	107-4027	Cap - Pivot Yoke	2	
71	<b>R121-3187</b>	121-3187	Bushing	4	
72	<b>R107-7400</b>	107-7400	Pin - Lynch	2	
73	<b>R302-5</b>	21-6010, 302-11, 302-37, 302-47, 302-5, 302-57, 302-58, 302-6, 31-0300, 32-9660, 60-0800, 62-3880, 92-4181	Fitting - Grease	4	
74	<b>R120-2183</b>	120-2183	Washer - Thrust	4	
75	<b>R120-2129</b>	120-2129	Pin Assy	2	
<i>Tech Note: Ser # 316000001-316999999:</i>					
76	<b>R323016</b>	302-33, 323016	Zerk - Grease	2	
77	<b>R84-2451</b>	84-2451	Chain - Straight 5	2	
78	<b>R63-8410</b>	53-6380, 63-4810, 63-8410	Washer - Isolator Bushing	4	

All original equipment manufacturers names and part numbers are used for identification purposes only, and we are in no way implying that our products are original equipment parts. Prices subject to change without notice.



# Replaces Toro Reelmaster 3575-D Parts

*Traction Unit*

*2 & 3 Lift Arm & Hydrualics*



Item No	R&R Part No.	OEM Part No.	Description	Qty Req	Order Quantity
79	<b>R400264</b>	01-150-0180, 01-178-0610, 20-48-AD, 20-48-AGD, 32-9160, 3224-3, 323-29, 323-7, 400264, 908035P	Bolt - Hex HD 3/8-16 x 1-1/4	4	
80	<b>R104-8301</b>	104-8301, 104-9301, 109-6658, 133-7570	Locknut - 3/8-16 Nylon Flanged	4	
81	<b>R32144-14</b>	32104-32, 32104-49, 32144-14	Bolt - Hex Washer 5/16-18 x 5/8	4	
82	<b>R104-0015</b>	104-0015, 104-8339	Bushing - Flanged	4	
85	<b>R3-6498</b>	3--6498, 3-6498, 47-8270	Washer - Thrust	4	
87	<b>R92-1298</b>	92-1298	Pin - Clik	2	
90	<b>R93-9310</b>	108-4436, 75-0780, 93-9310	Hydraulic Cylinder - Front C/Rear	2	
91	<b>R107-2052</b>	107-2052, 138-1248	Pivot Yoke Assy	2	
92	<b>R110-0922</b>	110-0922	Hoop - Chain	2	
93	<b>R69-6470</b>	69-6470	Bushing - Flanged	4	

All original equipment manufacturers names and part numbers are used for identification purposes only, and we are in no way implying that our products are original equipment parts. Prices subject to change without notice.