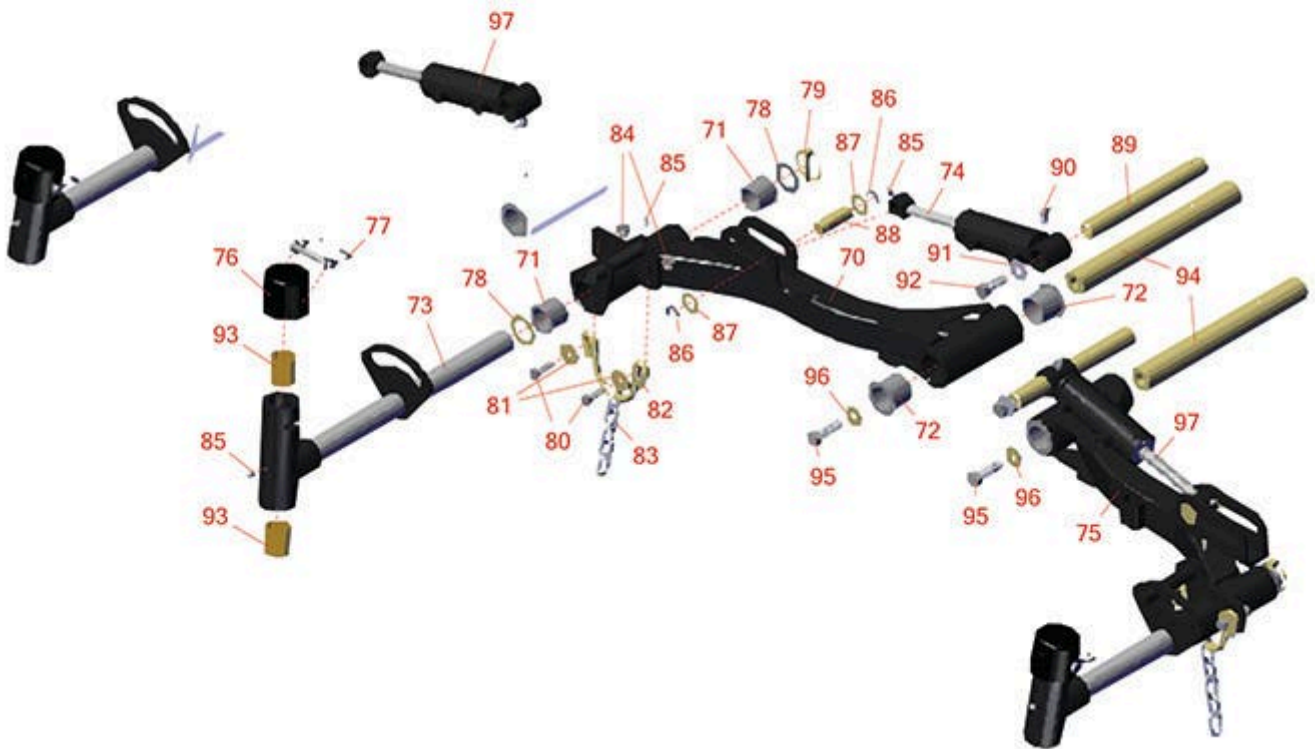




Replaces Toro Reelmaster 3575-D Parts

Traction Unit

1, 4 & 5 Lift Arm & Hydraulics



All original equipment manufacturers names and part numbers are used for identification purposes only, and we are in no way implying that our products are original equipment parts. Prices subject to change without notice.



Replaces Toro Reelmaster 3575-D Parts

Traction Unit

1, 4 & 5 Lift Arm & Hydraulics



Item No	R&R Part No.	OEM Part No.	Description	Qty Req	Order Quantity
Overhaul Kits					
1	R119-6992	119-6992	Seal Kit - Fits R119-6987 & R119-6988 Cylinder	3	
1	R133-2900	133-2900	Seal Kit - Cylinder	3	
Other Parts Available					
70	R110-0991	110-0991	Lift Arm - No. 1	1	
71	R104-0015	104-0015, 104-8339	Bushing - Flanged	6	
72	R69-6470	69-6470	Bushing - Flanged	6	
<i>Tech Note: Ser# 316000001-316999999 and 401390001-402261100:</i>					
73	R107-2052	107-2052, 138-1248	Pivot Yoke Assy	3	
<i>Tech Note: Ser# 316000001-316999999 and 401390001-402261100:</i>					
74	R119-6988	119-6988	Hydraulic Cylinder	1	
<i>Tech Note: Ser# 316000001-316999999 and 401390001-402261100:</i>					
74	R93-9310	108-4436, 75-0780, 93-9310	Hydraulic Cylinder - Front C/Rear	1	
<i>Tech Note: Ser# 400000000-4034460000:</i>					
75	R114-8874	114-8874	Lift Arm - No. 4	1	
76	R107-4027	107-4027	Cap - Pivot Yoke	3	
77	R107-7400	107-7400	Pin - Lynch	3	
78	R76-2980	76-2980	Washer - Thrust	6	
79	R92-1298	92-1298	Pin - Klik	3	

All original equipment manufacturers names and part numbers are used for identification purposes only, and we are in no way implying that our products are original equipment parts. Prices subject to change without notice.



Replaces Toro Reelmaster 3575-D Parts

Traction Unit

1, 4 & 5 Lift Arm & Hydraulics



Item No	R&R Part No.	OEM Part No.	Description	Qty Req	Order Quantity
80	R400264	01-150-0180, 01-178-0610, 20-48-AD, 20-48-AGD, 32-9160, 3224-3, 323-29, 323-7, 400264, 908035P	Bolt - Hex HD 3/8-16 x 1-1/4	6	
81	R63-8410	53-6380, 63-4810, 63-8410	Washer - Isolator Bushing	6	
82	R110-0922	110-0922	Hoop - Chain	3	
83	R84-2451	84-2451	Chain - Straight 5	3	
84	R104-8301	104-8301, 104-9301, 109-6658, 133-7570	Locknut - 3/8-16 Nylon Flanged	6	
85	R302-5	21-6010, 302-11, 302-37, 302-47, 302-5, 302-57, 302-58, 302-6, 31-0300, 32-9660, 60-0800, 62-3880, 92-4181	Fitting - Grease	9	
86	R32120-93	32120-93	Snap Ring - HD	6	
87	R3-6498	3--6498, 3-6498, 47-8270	Washer - Thrust	6	
88	R104-0046	104-0046	Pin - Slide - Cylinder	3	

All original equipment manufacturers names and part numbers are used for identification purposes only, and we are in no way implying that our products are original equipment parts. Prices subject to change without notice.



Replaces Toro Reelmaster 3575-D Parts

Traction Unit

1, 4 & 5 Lift Arm & Hydraulics



Item No	R&R Part No.	OEM Part No.	Description	Qty Req	Order Quantity
89	R117-0148	117-0148	Pin - Hyd Cyl	3	
<i>Tech Note: Ser # 316999999-401390000:</i>					
90	R323016	302-33, 323016	Zerk - Grease	3	
91	R453017	01-166-0050, 01-166-0240, 01-166-0800, 24-13-AD, 24-14-AD, 32-8110, 3256-26, 3256-6, 453017, 69-8980, 87-7270	Washer - Flat 1/2	3	
92	R3234-32	3234-32, 3434-32	Bolt - 1/2-13 x 1 1/4 Hex Flange Bolt	3	
93	R121-3187	121-3187	Bushing	6	
94	R127-8494	127-8494	Pin - Lift Arm	3	
95	R325-7	01-150-0380, 01-178-0814, 3226-3, 325-7, 48-9490	Bolt - 1/2-13 x 1 3/4 Hex HD Gr 5	3	
96	R87-7270-01	87-7270, 87-7270-01	Washer - Flat 1/2	3	
97	R119-6987	119-6987	Hyd Cylinder Assy	2	

Tech Note: Ser# 316000001-316999999 and 401390001-402261100:

All original equipment manufacturers names and part numbers are used for identification purposes only, and we are in no way implying that our products are original equipment parts. Prices subject to change without notice.