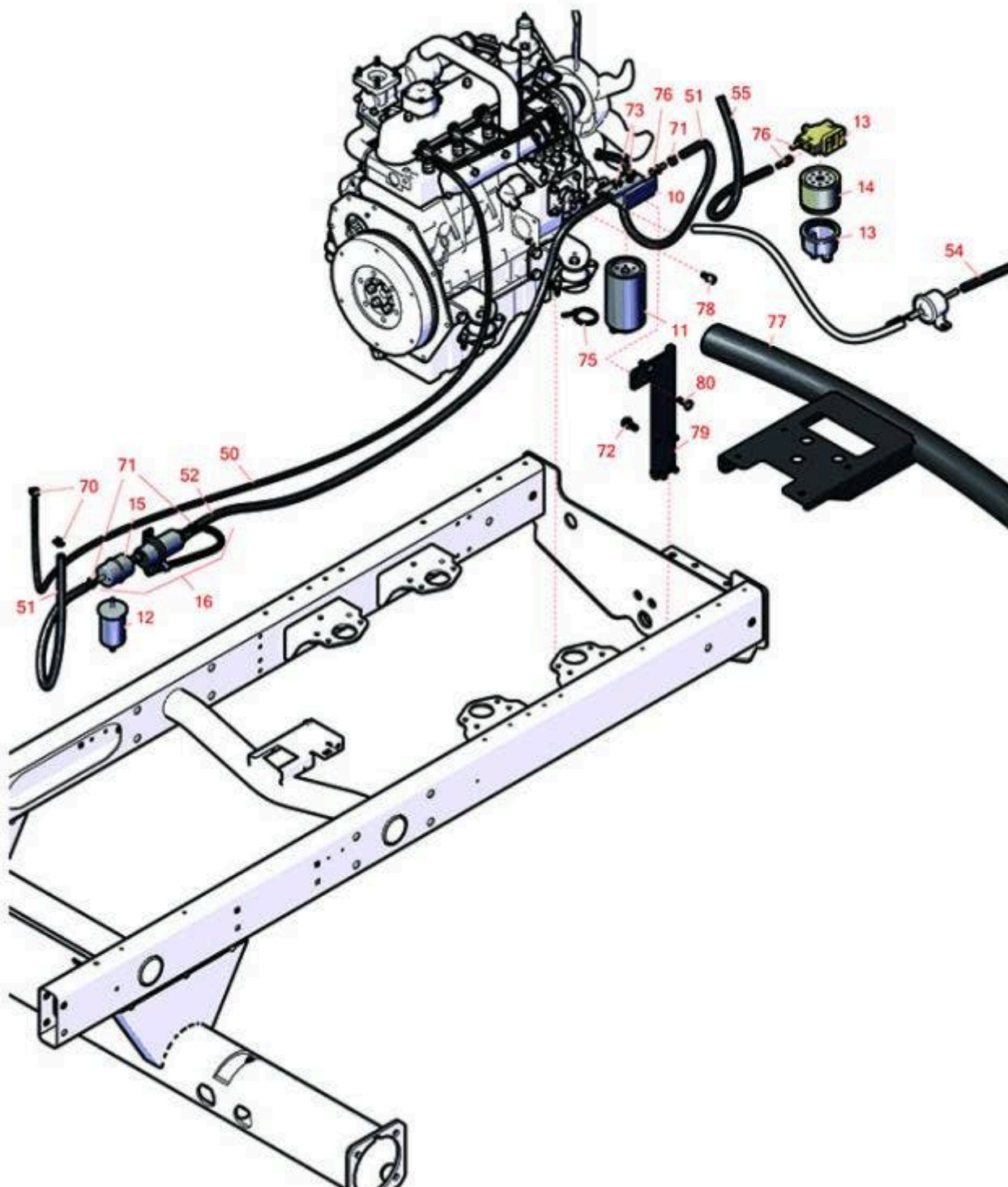




Replaces Toro Reelmaster 5410-D Parts

Traction Unit

Fuel System, Battery & Bumper



All original equipment manufacturers names and part numbers are used for identification purposes only, and we are in no way implying that our products are original equipment parts. Prices subject to change without notice.



Replaces Toro Reelmaster 5410-D Parts

Traction Unit

Fuel System, Battery & Bumper



| Item No | R&R Part No. | OEM Part No. | Description | Qty Req | Order Quantity |
|---------|--------------|--------------|-------------|---------|----------------|
|---------|--------------|--------------|-------------|---------|----------------|

Filters

| | | | | | |
|----|---------------------|---------------------------------|-------------------------------------|---|--|
| 10 | R110-9044 | 110-9044, 125-2914 | Donaldson Water/Fuel Separator Assy | 1 | |
| 11 | R110-9049 | 110-9049 | Donaldson Fuel Filter - Spin On | 1 | |
| 12 | RX1258143012 | 108-3828, 98-7612 | Kubota Fuel Filter | 1 | |
| 13 | R98-9305 | 98-9305 | Water/Fuel Separator Assy | 1 | |
| 14 | R98-9764 | 98-9764 | Element - Water Fuel Separator | 1 | |
| 15 | RRF10534 | 112-7836, RR ONLY, RRONLY | SilverGuard Fuel Filter - Inline | 1 | |
| 15 | R112-7836 | 112-7836, RR ONLY | Baldwin Fuel Filter - in Line | 1 | |
| 16 | R110-8806 | 110-8806 | Fuel Pump and Filter Assy | 1 | |

Hoses

| | | | | | |
|----|------------------|--|-----------|---|--|
| 50 | R110-9011 | 100-6588, 110-5688, 110-9011, 43-4230 | Hose-Fuel | 1 | |
| 51 | R110-3257 | 110-3257, 63-7630 | Hose-Fuel | 1 | |
| 52 | R110-3259 | 110-3259 | Hose-Fuel | 1 | |
| 54 | R109-0309 | 109-0309 | Hose-Fuel | 1 | |
| 55 | R110-4107 | 109-0278, 110-4107 | Hose-Fuel | 1 | |

Other Parts Available

| | | | | | |
|----|------------------|----------------------|------------|---|--|
| 70 | R2412-146 | 2412-146, 2412-80 | Hose Clamp | 6 | |
|----|------------------|----------------------|------------|---|--|

All original equipment manufacturers names and part numbers are used for identification purposes only, and we are in no way implying that our products are original equipment parts. Prices subject to change without notice.



Replaces Toro Reelmaster 5410-D Parts

Traction Unit

Fuel System, Battery & Bumper



| Item No | R&R Part No. | OEM Part No. | Description | Qty Req | Order Quantity |
|---------|---------------------|--|----------------------------------|---------|----------------|
| 71 | R92-2379 | 92-2379 | Clamp - Hose | 6 | |
| 72 | R32144-14 | 32104-32, 32104-49, 32144-14 | Bolt - Hex Washer 5/16-18 x 5/8 | 4 | |
| 73 | R104-8300 | 104-8300, 104-8300 , 119-4041 | Locknut - 5/16-18 Flanged Y/Zinc | 3 | |
| 75 | R3290-378 | 30-1740, 3290-378, 52-6570, 60-4340 | Cable Tie | 1 | |
| 76 | R353-783 | 353-783 | Fitting - Straight | 4 | |
| 77 | R110-8951-03 | 110-8951-03 | Bumper Assy | 2 | |
| 78 | R98-9311 | 98-9311 | Swivel-Throttle | 1 | |
| 79 | R110-8968-01 | 110-8968-01 | Mount - Water Separator | 1 | |
| 80 | R3230-22 | 3230-22, R3230-22 | Bolt - Carriage 5/16-18 x 1 | 2 | |

All original equipment manufacturers names and part numbers are used for identification purposes only, and we are in no way implying that our products are original equipment parts. Prices subject to change without notice.