

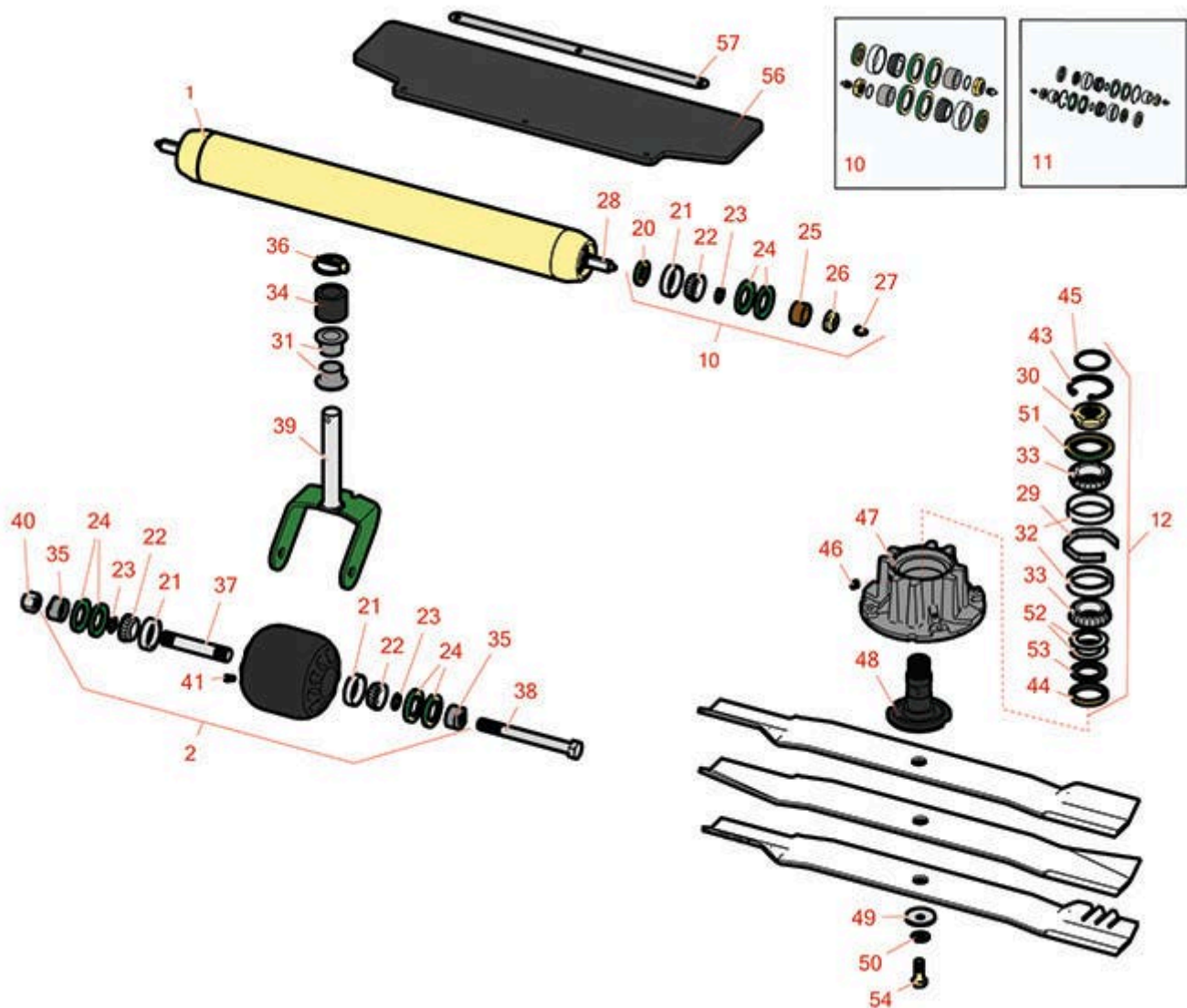


Replaces John Deere 7400A Rotary

Mower Parts

Rotary Cutting Unit

Rotary Cutting Unit



All original equipment manufacturers names and part numbers are used for identification purposes only, and we are in no way implying that our products are original equipment parts. Prices subject to change without notice.



Replaces John Deere 7400A Rotary

Mower Parts

Rotary Cutting Unit

Rotary Cutting Unit



Item No	R&R Part No.	OEM Part No.	Description	Qty Req	Order Quantity
---------	--------------	--------------	-------------	---------	----------------

R&R Rollers

1	RTCA25970	RTCA25970, TCA25970	Roller Assy	3	
2	RTCA19047	TCA19047	Caster Wheel Assy	6	

Tech Note: Up to Serial # 030000:

Overhaul Kits

10	RAET10632	AET10632	Overhaul Kit - Roller	3	
<i>Detail Description: Includes 4 ea: RET15755 Seal; 2 ea: R237-54 O-Ring, R253-122 Seal, R254-78 Bearing, R254-79 Cup, R3296-15 Locknut, R471219 Grease Zerk, RET15726 Sleeve, RET15756 Seal;</i>					
11	R500578		Overhaul Kit - Roller	3	
13	RAUC20746	AUC19580, TCA25685	Spindle Assy	3	

Other Parts Available

20	RET15756	ET15756, MT1739, MT739	Seal	6	
21	R254-79	JD8226	Cup - Bearing	18	
<i>Detail Description: Use R254-79M installation mandrel to properly install race.:</i>					
22	R254-78	JD8188	Tapered Bearing Cone	18	
23	R237-54	U46731, U6731	O-Ring - Small	18	
24	RET15755	ET15755	Seal - Oil	36	
25	RET15726	ET15726, RET15726	Sleeve - Wear Hardened	6	
26	R3296-15	N101345	Locknut - 3/4-16 Nylon Jam	6	

All original equipment manufacturers names and part numbers are used for identification purposes only, and we are in no way implying that our products are original equipment parts. Prices subject to change without notice.



Replaces John Deere 7400A Rotary

Mower Parts

Rotary Cutting Unit

Rotary Cutting Unit



Item No	R&R Part No.	OEM Part No.	Description	Qty Req	Order Quantity
27	R471219	471219, 471231, JD7759, JD7798	Zerk - Grease	6	
28	RTCUC39718	TCUC39718	Shaft - Roller - 29 in	1	
29	RTCUC32114	TCUC32114	Spacer - Spindle	3	
30	RTCUC27862	TCUC27862	Nut - Spindle	3	
31	RM83541	M83541	Bushing - Flanged - 1 in ID	24	
32	RJD8230	JD8230	Tapered Bearing Cup	6	
33	RJD8194	JD8194	Tapered Bearing Cone	6	
34	RTCUC24952	TCUC24952	Spacer	12	
35	RTCUC26091	TCUC26091	Spacer	12	
36	RM115827	M115827	Pin - Quick Lock	12	
37	RTCUC26006	TCUC26006	Axle - (A)	6	
38	R327-17	19H3185	Axle - Caster Fork 5/8-11 x 6	6	
39	RTCA17787	TCA17787	Caster Fork Assy	6	
40	R3296-53	U44915	Locknut - 5/8-11 ESNA Yellow	6	
41	R471217	JD7803	Fitting - Grease	6	
43	R32120-2	M42702	Ring - Retaining	3	
44	RTCUC32974	TCUC32974	Seal	3	
45	RH142234	H142234	O - Ring	3	
46	R170714	E14814	Fitting - Pressure Relief	3	
47	RUC32489	TCUC32112	Housing - Spindle	3	

All original equipment manufacturers names and part numbers are used for identification purposes only, and we are in no way implying that our products are original equipment parts. Prices subject to change without notice.



Replaces John Deere 7400A Rotary

Mower Parts

Rotary Cutting Unit

Rotary Cutting Unit



Item No	R&R Part No.	OEM Part No.	Description	Qty Req	Order Quantity
48	RTCU39253	TCU32113, TCU39253	Spindle - Blade	3	
49	RM147138	M147138	Washer - Belville	3	
50	RTCU27937	TCU27937	Washer - Anti Friction	3	
51	RTCU32975	TCU32975	Seal	3	
52	RUC10061	UC10061	Disk Spring	6	
53	RUC10057	SU303558, UC10057	Thrust Washer - Hardened	3	
54	RTCU28104	TCU28104	Bolt - Blade 10.9 Hardness	3	
56	R500615	TCU23571	Rubber Guard	3	
57	RTCU23572	TCU23572	Strip - Retaining	3	

All original equipment manufacturers names and part numbers are used for identification purposes only, and we are in no way implying that our products are original equipment parts. Prices subject to change without notice.