

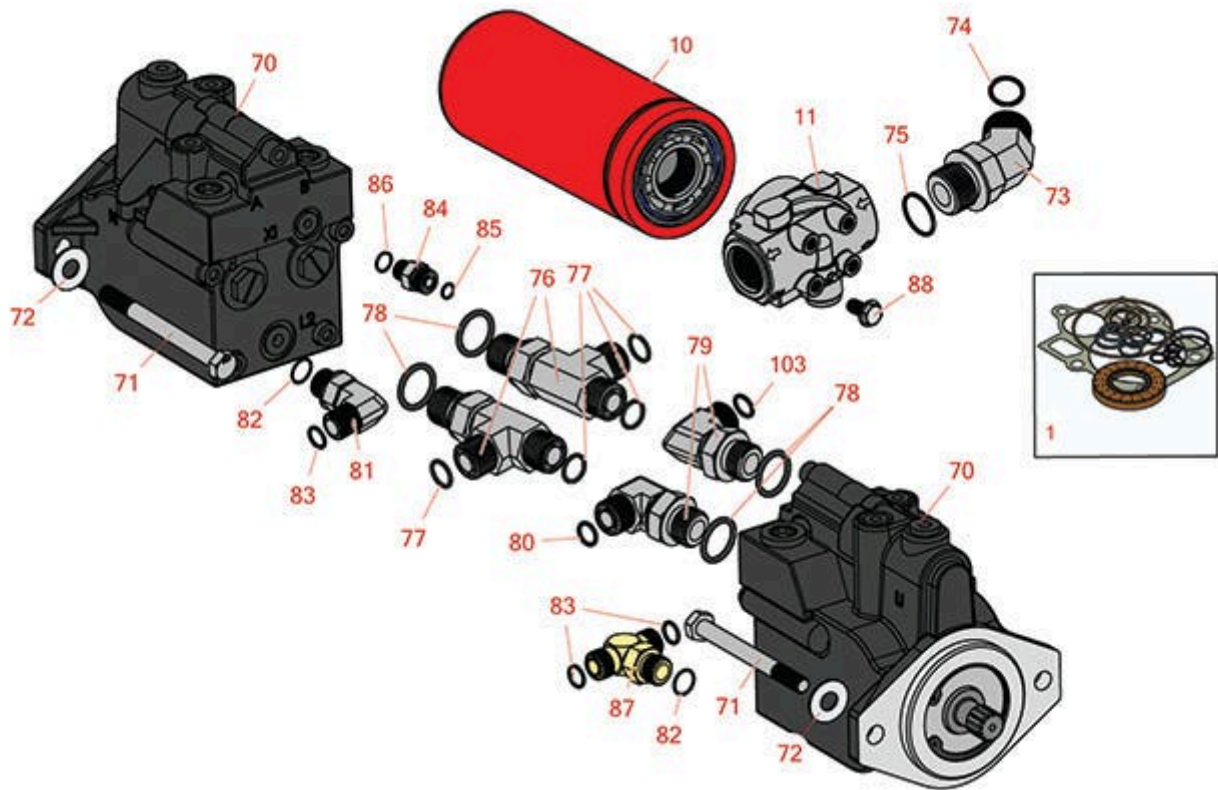


# Replaces Toro Groundsmaster 4000-D

## Parts

Rotary Mower - Model 30605

Steering Hydraulics



All original equipment manufacturers names and part numbers are used for identification purposes only, and we are in no way implying that our products are original equipment parts. Prices subject to change without notice.



# Replaces Toro Groundsmaster 4000-D Parts

Rotary Mower - Model 30605  
Steering Hydraulics



Item No	R&R Part No.	OEM Part No.	Description	Qty Req	Order Quantity
---------	--------------	--------------	-------------	---------	----------------

1	<b>R121-1736</b>	121-1736	Overhaul Seal Kit	1	
---	------------------	----------	-------------------	---	--

## Filters

10	<b>R94-2621</b>	94-2621	Baldwin Oil Filter - Hyd	1	
----	-----------------	---------	--------------------------	---	--

10	<b>RRF10621</b>		Slverguard Oil Filter - Hyd	1	
----	-----------------	--	-----------------------------	---	--

11	<b>R121-1577</b>	121-1577	Head - Filter	1	
----	------------------	----------	---------------	---	--

## Other Parts Available

70	<b>R120-8812</b>	120-8812	Hydraulic Motor Assy	2	
----	------------------	----------	----------------------	---	--

71	<b>R33116-120</b>	33116-120	Bolt - M12-1.75 x 120mm Hx HD	4	
----	-------------------	-----------	-------------------------------	---	--

72	<b>R106-9888</b>	106-9888	Washer-Flat	4	
----	------------------	----------	-------------	---	--

73	<b>R104-3509</b>	104-3509	Hydraulic Fitting - 45 Deg	1	
----	------------------	----------	----------------------------	---	--

74	<b>R340-65</b>	340-65	O-Ring	1	
----	----------------	--------	--------	---	--

75	<b>R237-146</b>	237-146, 340-146	O-Ring	1	
----	-----------------	---------------------	--------	---	--

76	<b>R340-148</b>	340-148	Fitting-Tee	2	
----	-----------------	---------	-------------	---	--

77	<b>R237-58</b>	237-58	O-Ring	4	
----	----------------	--------	--------	---	--

78	<b>R237-81</b>	237-81, 237.81, 327-81	O-Ring	4	
----	----------------	------------------------------	--------	---	--

79	<b>R340-139</b>	340-139	Hydraulic Fitting - 90 Deg	2	
----	-----------------	---------	----------------------------	---	--

80	<b>R237-65</b>	237-65, 237.65	O-Ring	2	
----	----------------	-------------------	--------	---	--

81	<b>R340-98</b>	340-98	Hydraulic Fitting	1	
----	----------------	--------	-------------------	---	--

82	<b>R237-79</b>	237-79	O-Ring	1	
----	----------------	--------	--------	---	--

All original equipment manufacturers names and part numbers are used for identification purposes only, and we are in no way implying that our products are original equipment parts. Prices subject to change without notice.



# Replaces Toro Groundsmaster 4000-D Parts

*Rotary Mower - Model 30605  
Steering Hydraulics*



Item No	R&R Part No.	OEM Part No.	Description	Qty Req	Order Quantity
83	<b>R237-30</b>	23-6320, 237-30	O-Ring - Seal	1	
84	<b>R340-2</b>	340-2, 60-1920	Hydraulic Fitting - Striaight	1	
85	<b>R237-22</b>	107-8844, 237-22, 237-78	O-Ring	1	
86	<b>R237-42</b>	237-42, 31-4160	O-Ring	1	
87	<b>R340-157</b>	340-157	Hydraulic Fitting - Tee	1	
88	<b>R3234-1</b>	321-11, 3234-1	Bolt - Flanged Serrated Hex HD 3/8-16 x 3/4	4	

All original equipment manufacturers names and part numbers are used for identification purposes only, and we are in no way implying that our products are original equipment parts. Prices subject to change without notice.