

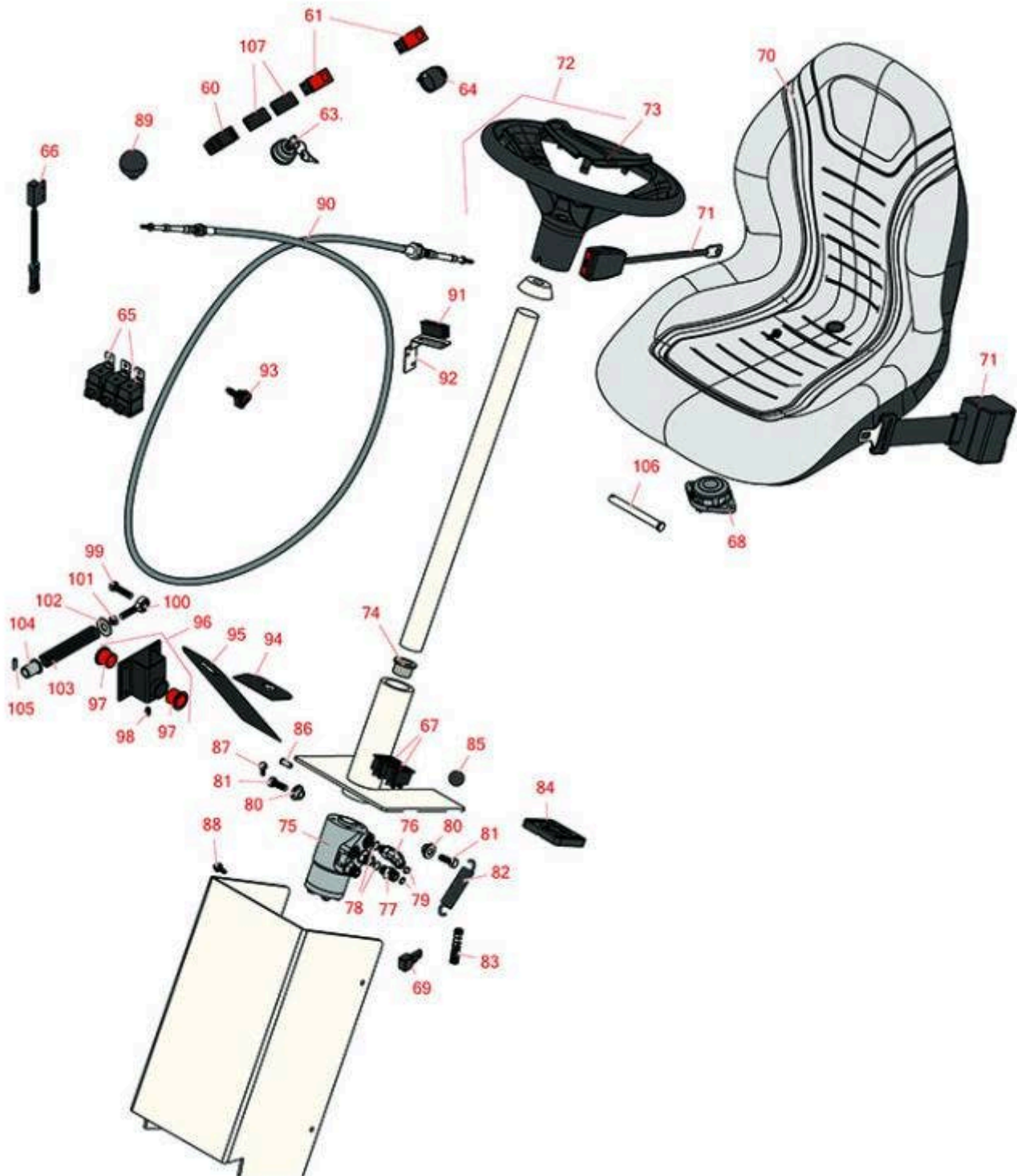
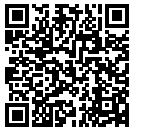


# Replaces Toro Groundsmaster 4100-D

## Parts

Rotary Mower - Model 30413

Steering & Seat



All original equipment manufacturers names and part numbers are used for identification purposes only, and we are in no way implying that our products are original equipment parts. Prices subject to change without notice.



# Replaces Toro Groundsmaster 4100-D Parts

Rotary Mower - Model 30413  
Steering & Seat



Item No	R&R Part No.	OEM Part No.	Description	Qty Req	Order Quantity
---------	--------------	--------------	-------------	---------	----------------

## Gauges & Controls

60	<b>R95-8999</b>	95-8999	Switch - Headlight	1	
61	<b>R100-8072</b>	100-8072	Switch	2	
63	<b>R104-2541</b>	104-2541, 88-9830	Switch - Key 6 Lead 5/8 Mt.	1	
64	<b>R80-9330</b>	80-9330	Alarm - Audio	1	
65	<b>R99-7430</b>	99-7430	Relay - 30 Amp	3	
66	<b>R100-1270</b>	100-1270	Sensor - Proximity	1	
67	<b>R100-8071</b>	100-8071	Lamp - Warning	2	
68	<b>R92-6282</b>	62-6282, 92-6282	Switch - Kill - Seat	1	
69	<b>R100-4918</b>	100-4818, 100-4918	Diode	1	

## Other Parts Available

70	<b>RMXB200GY</b>	100-3187, 104-4620, 104-7620, 21-4880, 351-59, 351-76, 49-8130, 63-9410, 66-5400, 75-9190, 750105, 92-6280, MXB200GY	Milsco Seat XB200 - Grey	1	
----	------------------	--	--------------------------	---	--

*Tech Note: This seat will not accept seat belts:*

71	<b>R150848</b>	100-4928, 110-0413, 110-9720, 95-8910	Belt-Seat	1	
----	----------------	--	-----------	---	--

All original equipment manufacturers names and part numbers are used for identification purposes only, and we are in no way implying that our products are original equipment parts. Prices subject to change without notice.



# Replaces Toro Groundsmaster 4100-D Parts

*Rotary Mower - Model 30413*  
*Steering & Seat*



Item No	R&R Part No.	OEM Part No.	Description	Qty Req	Order Quantity
72	<b>R98-1471</b>	93-5212, 94-3500, 98-1471	Steering Wheel Assy - 14 in Incl Cap	1	
73	<b>R98-1468</b>	98-1468	Cap - 14" Steering Wheel	1	
74	<b>R256-132</b>	256-132	Bushing - Flangd	2	
75	<b>R130-7944</b>	104-2213, 114-5074, 130-7944	Valve- Control - Steering	1	
76	<b>R340-77</b>	340-100, 340-77, 95-7889	Hydraulic Fitting	1	
77	<b>R340-2</b>	340-2, 60-1920	Hydraulic Fitting - Striaght	3	
78	<b>R237-22</b>	107-8844, 237-22, 237-78	O-Ring	4	
79	<b>R237-42</b>	237-42, 31-4160	O-Ring	4	
80	<b>R93-5988</b>	93-5204, 93-5988	Hub - Pivot	2	
81	<b>R323-6</b>	01-150-0010, 01-178-0608, 20-47-AD, 20-47-AGD, 3224-2, 323-6, 49-3510, 908034P, 908332	Bolt - Hex HD 3/8-16 x 1 GR5 YZ	2	
82	<b>R93-5985</b>	93-5985	Spring - Extension	1	
83	<b>R71-8310</b>	71-8310	Spring - Compression	1	

All original equipment manufacturers names and part numbers are used for identification purposes only, and we are in no way implying that our products are original equipment parts. Prices subject to change without notice.



# Replaces Toro Groundsmaster 4100-D Parts

*Rotary Mower - Model 30413  
Steering & Seat*



Item No	R&R Part No.	OEM Part No.	Description	Qty Req	Order Quantity
84	<b>R93-7629</b>	27-7570, 27-7580, 49-6170, 93-7629, 93-8743	Rubber Foot Pad - Brake	1	
85	<b>R93-5312</b>	93-5312	Knob	1	
86	<b>R32148-6</b>	32148-6	Insert - Nut	6	
87	<b>R33103-016</b>	33103-016, 93-5919	Screw-HHF	4	
88	<b>R3234-33</b>	3234-33	Bolt - 1/4-20 x 3/4 Serr Hex Flanged	10	
89	<b>R233-48</b>	233-24, 233-48, 30-3370	Knob	1	
90	<b>R104-7547</b>	104-7547	Cable - Throttle	1	
91	<b>R58-4250</b>	58-4250, 99-3497	Catch - Magnetic	1	
92	<b>R104-7545</b>	104-7545	Bracket - Latch	1	
93	<b>R95-9648</b>	95-9648	Knob - 3/8-16 Thread	1	
94	<b>R93-5368</b>	93-5368	Abrasive - Pedal	1	
95	<b>R93-5347</b>	93-5347	Abrasive - Pedal	1	
96	<b>R104-3565</b>	104-3565	Pedal Bracket Assy	1	
97	<b>R256-10</b>	256-10	Bushing - Flanged	2	

All original equipment manufacturers names and part numbers are used for identification purposes only, and we are in no way implying that our products are original equipment parts. Prices subject to change without notice.



# Replaces Toro Groundsmaster 4100-D Parts

Rotary Mower - Model 30413  
Steering & Seat



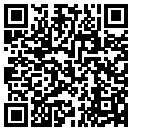
Item No	R&R Part No.	OEM Part No.	Description	Qty Req	Order Quantity
98	<b>R302-5</b>	21-6010, 302-11, 302-37, 302-47, 302-5, 302-57, 302-58, 302-6, 31-0300, 32-9660, 60-0800, 62-3880, 92-4181	Fitting - Grease	1	
99	<b>R323-8</b>	01-150-0060, 01-178-0612, 20-49-AD, 20-49-AGD, 323-8, 3273-41, 908036P	Bolt - Hex HD 3/8-16 x 1-1/2 GR8	0	
100	<b>R2411-36</b>	2411-36, R2411-36	Rod End	0	
101	<b>R3220-3</b>	01-191-0624, 3220-3, 3290-149	Nut - Jam Ball Joint	0	
102	<b>R453013</b>	01-166-0140, 01-166-0700, 3256-5, 80-4850	Washer - Flat 7/16	0	
103	<b>R84-9100</b>	84-9100	Spring	1	
104	<b>R92-7610</b>	92-7610	Retainer-Spring	1	
105	<b>R32121-11</b>	32121-11	Pin - Roll 1/4 x 3/4	1	
106	<b>R283-83</b>	283-83, 42194, 93-5343	Pin - Clevis	1	
107	<b>R99-7420</b>	100-8493, 99-7420	Plug-Hole	2	

All original equipment manufacturers names and part numbers are used for identification purposes only, and we are in no way implying that our products are original equipment parts. Prices subject to change without notice.



# Replaces Toro Groundsmaster 4100-D Parts

*Rotary Mower - Model 30413  
Steering & Seat*



All original equipment manufacturers names and part numbers are used for identification purposes only, and we are in no way implying that our products are original equipment parts. Prices subject to change without notice.